

Instrument Summary:

Instrument ID: iCAP Q
Serial Number: Undefined

Labbook Summary:

Path and filename: _Application Data\Workspace\LabBooks\wlw\20210903-1.imexp
Labbook created by: Administrator
Based on template:
Hardware configuration: iCAPQ1
Labbook type: eQuant
Qtegra version (last saved): 2.7.2425.154
Labbook started: 9/3/2021 3:47:38 PM
Labbook finished: 9/3/2021 5:11:39 PM

Method Summary:

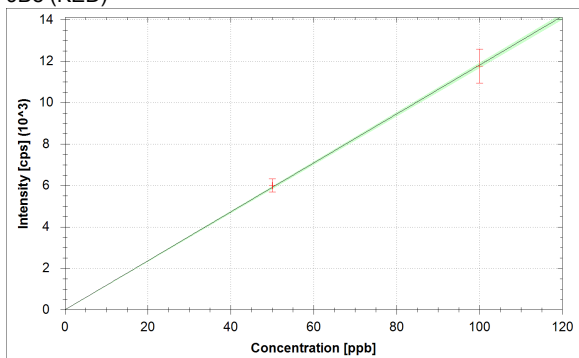
Isotope	Mode	Dwell time (s)	# of Channels	Spacing	Resolution	IS
6Li (KED)	KED	0.03	3	0.1	Normal	
9Be (KED)	KED	0.03	3	0.1	Normal	6Li (KED)
11B (KED)	KED	0.03	3	0.1	Normal	6Li (KED)
24Mg (KED)	KED	0.03	3	0.1	Normal	6Li (KED)
27Al (KED)	KED	0.03	3	0.1	Normal	45Sc (KED)
45Sc (KED)	KED	0.03	3	0.1	Normal	
51V (KED)	KED	0.03	3	0.1	Normal	45Sc (KED)
52Cr (KED)	KED	0.03	3	0.1	Normal	45Sc (KED)
55Mn (KED)	KED	0.03	3	0.1	Normal	45Sc (KED)
56Fe (KED)	KED	0.03	3	0.1	Normal	45Sc (KED)
58Ni (KED)	KED	0.03	3	0.1	Normal	45Sc (KED)
59Co (KED)	KED	0.03	3	0.1	Normal	45Sc (KED)
63Cu (KED)	KED	0.03	3	0.1	Normal	89Y (KED)
64Zn (KED)	KED	0.03	3	0.1	Normal	89Y (KED)
69Ga (KED)	KED	0.03	3	0.1	Normal	89Y (KED)
75As (KED)	KED	0.03	3	0.1	Normal	89Y (KED)
80Se (KED)	KED	0.03	3	0.1	Normal	89Y (KED)
85Rb (KED)	KED	0.03	3	0.1	Normal	89Y (KED)
88Sr (KED)	KED	0.03	3	0.1	Normal	89Y (KED)
89Y (KED)	KED	0.03	3	0.1	Normal	
107Ag (KED)	KED	0.03	3	0.1	Normal	115In (KED)
114Cd (KED)	KED	0.03	3	0.1	Normal	115In (KED)
115In (KED)	KED	0.03	3	0.1	Normal	
133Cs (KED)	KED	0.03	3	0.1	Normal	115In (KED)
138Ba (KED)	KED	0.03	3	0.1	Normal	159Tb (KED)
139La (KED)	KED	0.03	3	0.1	Normal	159Tb (KED)
140Ce (KED)	KED	0.03	3	0.1	Normal	159Tb (KED)
141Pr (KED)	KED	0.03	3	0.1	Normal	159Tb (KED)
142Nd (KED)	KED	0.03	3	0.1	Normal	159Tb (KED)
152Sm (KED)	KED	0.03	3	0.1	Normal	159Tb (KED)
153Eu (KED)	KED	0.03	3	0.1	Normal	159Tb (KED)
158Gd (KED)	KED	0.03	3	0.1	Normal	159Tb (KED)
159Tb (KED)	KED	0.03	3	0.1	Normal	
164Dy (KED)	KED	0.03	3	0.1	Normal	159Tb (KED)
166Er (KED)	KED	0.03	3	0.1	Normal	159Tb (KED)
169Tm (KED)	KED	0.03	3	0.1	Normal	159Tb (KED)
174Yb (KED)	KED	0.03	3	0.1	Normal	159Tb (KED)
175Lu (KED)	KED	0.03	3	0.1	Normal	159Tb (KED)
205Tl (KED)	KED	0.03	3	0.1	Normal	209Bi (KED)
208Pb (KED)	KED	0.03	3	0.1	Normal	209Bi (KED)
209Bi (KED)	KED	0.03	3	0.1	Normal	
232Th (KED)	KED	0.03	3	0.1	Normal	209Bi (KED)
238U (KED)	KED	0.03	3	0.1	Normal	209Bi (KED)

Isotope	Mode	Dwell time (s)	# of Channels	Spacing	Resolution
6Li (KED)	KED	0.03	3	0.1	Normal
45Sc (KED)	KED	0.03	3	0.1	Normal
89Y (KED)	KED	0.03	3	0.1	Normal
115In (KED)	KED	0.03	3	0.1	Normal
159Tb (KED)	KED	0.03	3	0.1	Normal
209Bi (KED)	KED	0.03	3	0.1	Normal

No. of sweeps	Time per sweep[s]	Time per main run[s]
10	3.87	38.7

Calibration Curves:

9Be (KED)



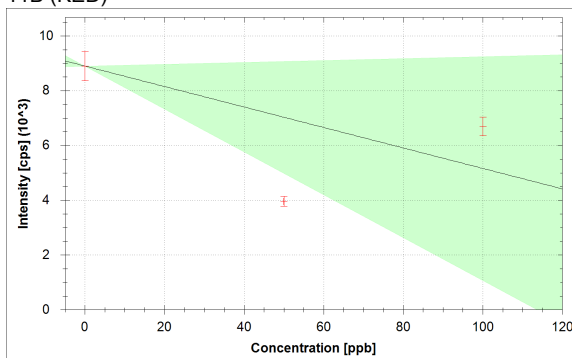
$$f(x) = 118.0565 \cdot x$$

$$R^2 = 0.9999$$

$$\text{BEC} = 0.000 \text{ ppb}$$

$$\text{LoD} = 0.0000 \text{ ppb}$$

11B (KED)



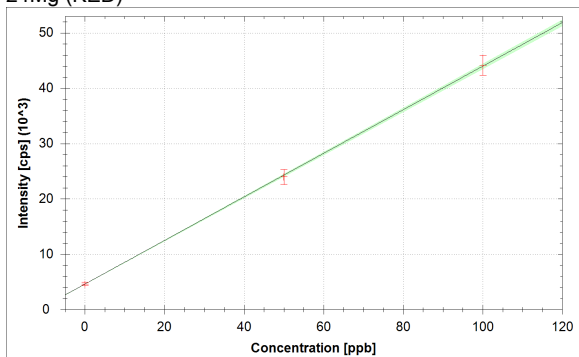
$$f(x) = -37.3909 \cdot x + 8897.1040$$

$$R^2 = 0.0390$$

$$\text{BEC} = -237.948 \text{ ppb}$$

$$\text{LoD} = \text{N/A}$$

24Mg (KED)



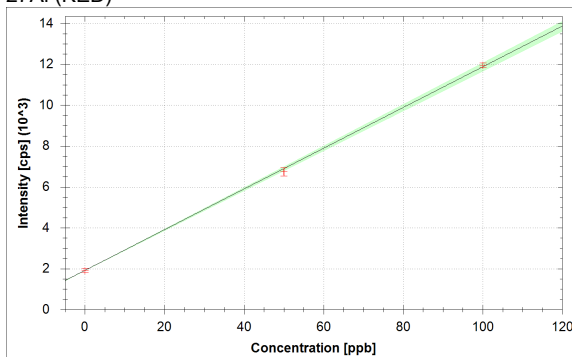
$$f(x) = 393.8311 \cdot x + 4609.8861$$

$$R^2 = 0.9998$$

$$\text{BEC} = 11.705 \text{ ppb}$$

$$\text{LoD} = 2.4225 \text{ ppb}$$

27Al (KED)



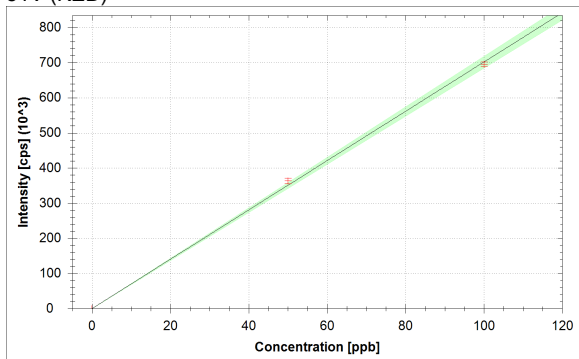
$$f(x) = 99.6117 \cdot x + 1916.4061$$

$$R^2 = 0.9994$$

$$\text{BEC} = 19.239 \text{ ppb}$$

$$\text{LoD} = 3.3690 \text{ ppb}$$

51V (KED)



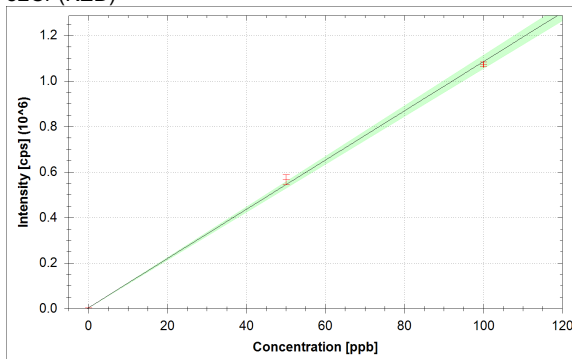
$$f(x) = 7016.6265 \cdot x + 95.4094$$

$$R^2 = 0.9992$$

$$\text{BEC} = 0.014 \text{ ppb}$$

$$\text{LoD} = 0.0090 \text{ ppb}$$

52Cr (KED)



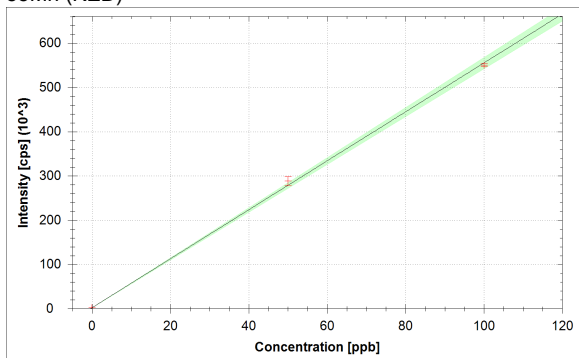
$$f(x) = 10809.5893 \cdot x + 3556.6313$$

$$R^2 = 0.9989$$

$$\text{BEC} = 0.329 \text{ ppb}$$

$$\text{LoD} = 0.0221 \text{ ppb}$$

55Mn (KED)



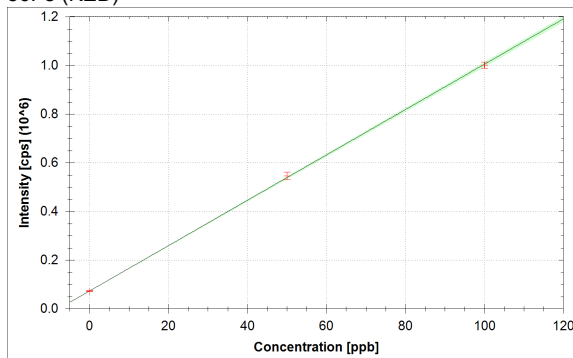
$$f(x) = 5531.1543 \cdot x + 2361.9100$$

$$R^2 = 0.9992$$

$$\text{BEC} = 0.427 \text{ ppb}$$

$$\text{LoD} = 0.0672 \text{ ppb}$$

56Fe (KED)



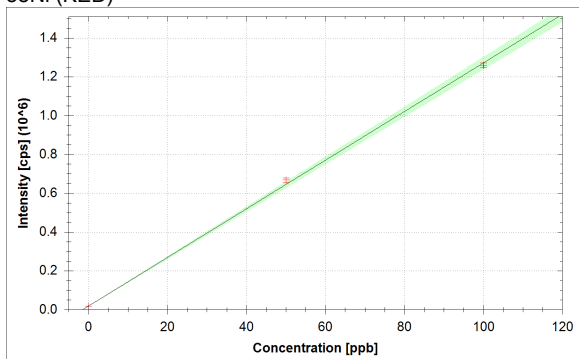
$$f(x) = 9321.3302 \cdot x + 72870.9329$$

$$R^2 = 0.9999$$

$$\text{BEC} = 7.818 \text{ ppb}$$

$$\text{LoD} = 0.5204 \text{ ppb}$$

58Ni (KED)



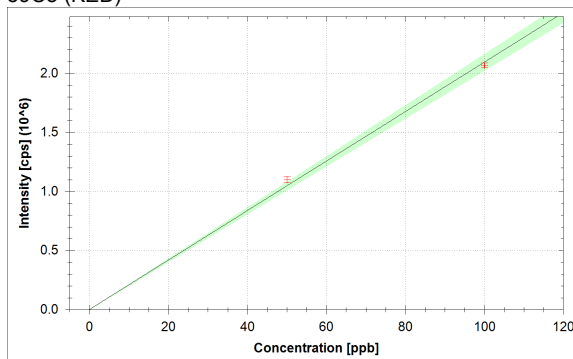
$$f(x) = 12529.1825 \cdot x + 17909.2671$$

$$R^2 = 0.9991$$

$$\text{BEC} = 1.429 \text{ ppb}$$

$$\text{LoD} = 0.0520 \text{ ppb}$$

59Co (KED)



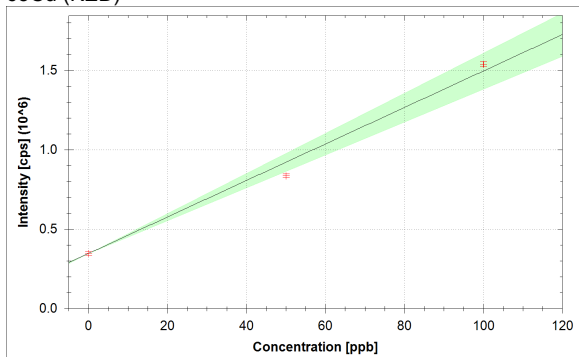
$$f(x) = 20935.3778 \cdot x + 341.4703$$

$$R^2 = 0.9984$$

$$\text{BEC} = 0.016 \text{ ppb}$$

$$\text{LoD} = 0.0076 \text{ ppb}$$

63Cu (KED)



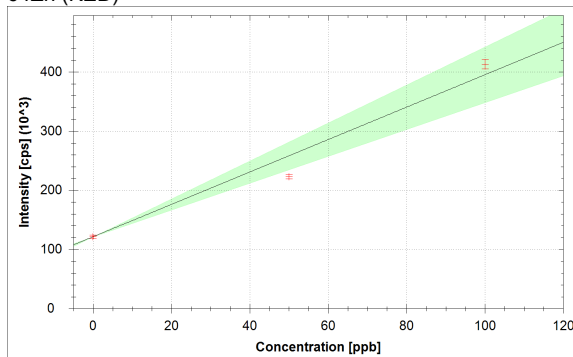
$$f(x) = 11494.1852 \cdot x + 347092.0122$$

$$R^2 = 0.9873$$

$$\text{BEC} = 30.197 \text{ ppb}$$

$$\text{LoD} = 2.8488 \text{ ppb}$$

64Zn (KED)



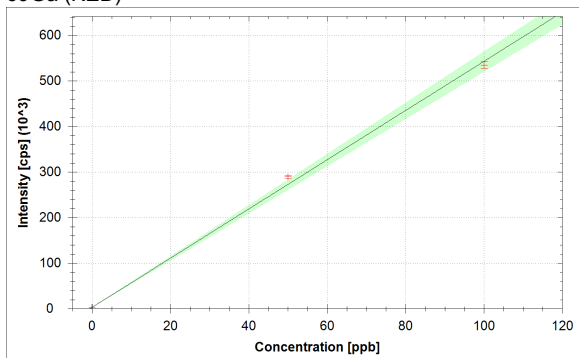
$$f(x) = 2740.8742 \cdot x + 121406.2761$$

$$R^2 = 0.9645$$

$$\text{BEC} = 44.295 \text{ ppb}$$

$$\text{LoD} = 3.2193 \text{ ppb}$$

69Ga (KED)



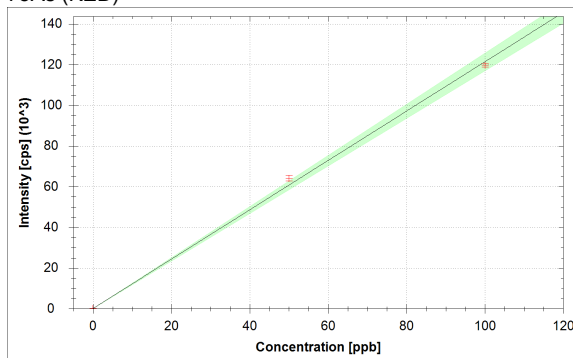
$$f(x) = 5399.4819x + 2950.5744$$

$$R^2 = 0.9977$$

$$\text{BEC} = 0.546 \text{ ppb}$$

$$\text{LoD} = 0.0495 \text{ ppb}$$

75As (KED)



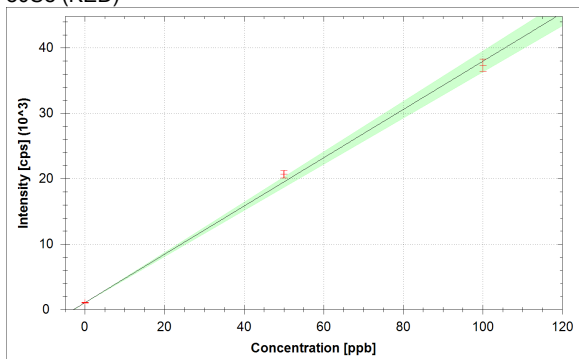
$$f(x) = 1212.7386x + 123.6274$$

$$R^2 = 0.9981$$

$$\text{BEC} = 0.102 \text{ ppb}$$

$$\text{LoD} = 0.0833 \text{ ppb}$$

80Se (KED)



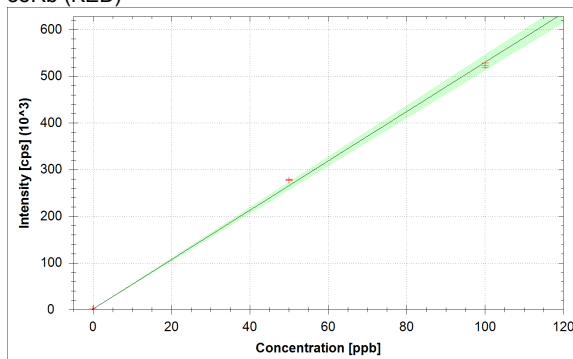
$$f(x) = 368.8344x + 1056.5123$$

$$R^2 = 0.9973$$

$$\text{BEC} = 2.864 \text{ ppb}$$

$$\text{LoD} = 0.5167 \text{ ppb}$$

85Rb (KED)



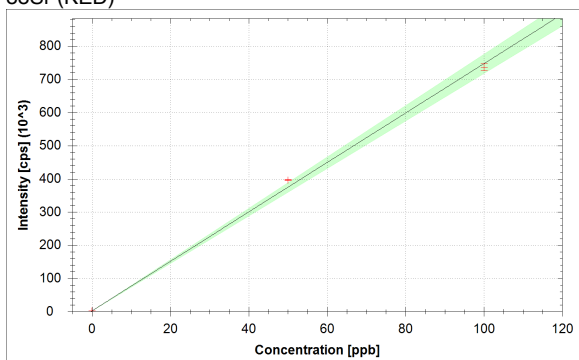
$$f(x) = 5285.1889x + 1261.1236$$

$$R^2 = 0.9986$$

$$\text{BEC} = 0.239 \text{ ppb}$$

$$\text{LoD} = 0.0049 \text{ ppb}$$

88Sr (KED)



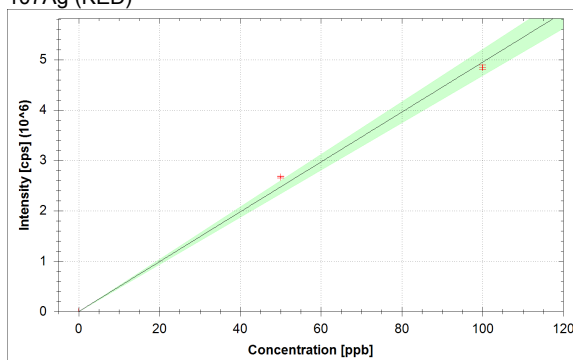
$$f(x) = 7450.7673x + 2301.3304$$

$$R^2 = 0.9978$$

$$\text{BEC} = 0.309 \text{ ppb}$$

$$\text{LoD} = 0.0092 \text{ ppb}$$

107Ag (KED)



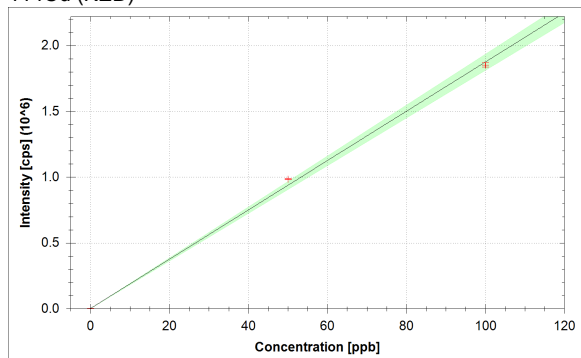
$$f(x) = 49469.7452x + 173.1884$$

$$R^2 = 0.9959$$

$$\text{BEC} = 0.004 \text{ ppb}$$

$$\text{LoD} = 0.0019 \text{ ppb}$$

114Cd (KED)



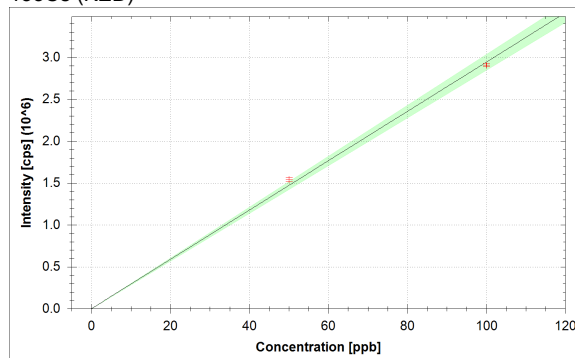
$$f(x) = 18726.2116 \cdot x + 1776.6081$$

$$R^2 = 0.9984$$

$$\text{BEC} = 0.095 \text{ ppb}$$

$$\text{LoD} = 0.0063 \text{ ppb}$$

133Cs (KED)



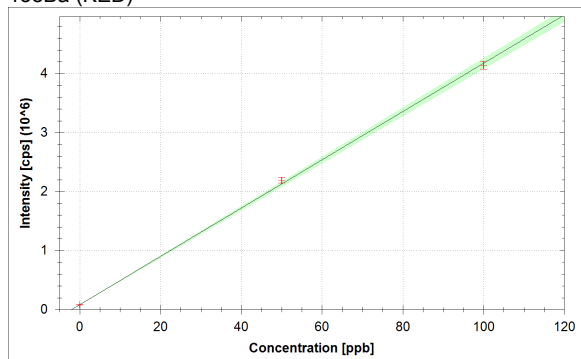
$$f(x) = 29423.0492 \cdot x + 382.2701$$

$$R^2 = 0.9985$$

$$\text{BEC} = 0.013 \text{ ppb}$$

$$\text{LoD} = 0.0047 \text{ ppb}$$

138Ba (KED)



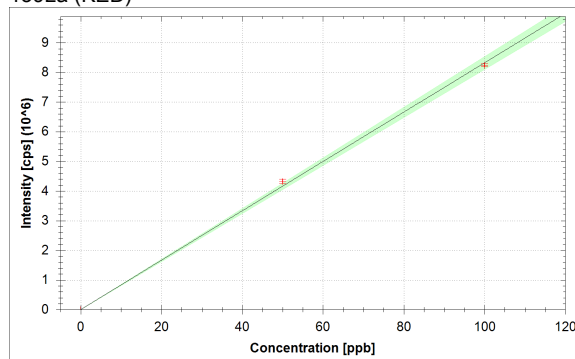
$$f(x) = 40906.6451 \cdot x + 82059.2268$$

$$R^2 = 0.9993$$

$$\text{BEC} = 2.006 \text{ ppb}$$

$$\text{LoD} = 0.1612 \text{ ppb}$$

139La (KED)



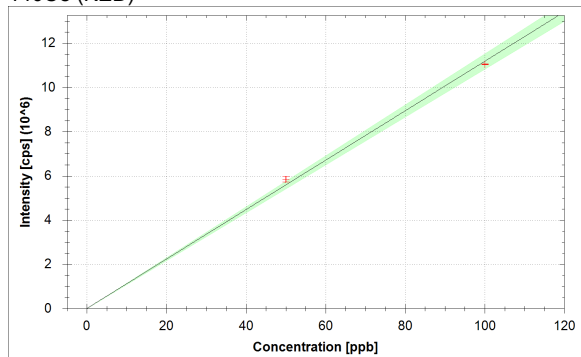
$$f(x) = 83243.4753 \cdot x + 1135.5377$$

$$R^2 = 0.9990$$

$$\text{BEC} = 0.014 \text{ ppb}$$

$$\text{LoD} = 0.0012 \text{ ppb}$$

140Ce (KED)



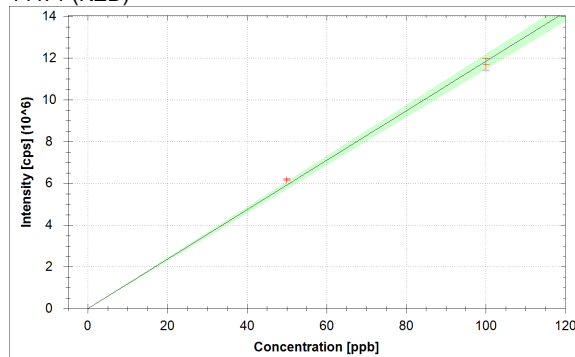
$$f(x) = 111743.5826 \cdot x + 3147.0717$$

$$R^2 = 0.9986$$

$$\text{BEC} = 0.028 \text{ ppb}$$

$$\text{LoD} = 0.0053 \text{ ppb}$$

141Pr (KED)



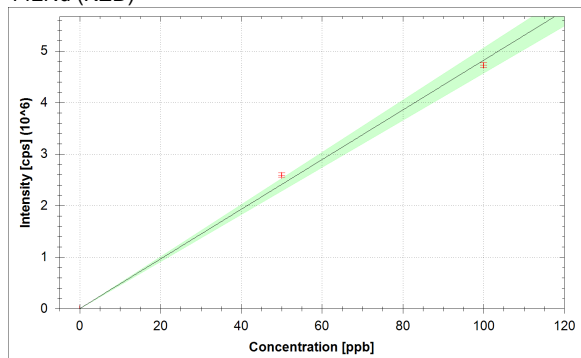
$$f(x) = 118372.1565 \cdot x + 504.1133$$

$$R^2 = 0.9987$$

$$\text{BEC} = 0.004 \text{ ppb}$$

$$\text{LoD} = 0.0015 \text{ ppb}$$

142Nd (KED)



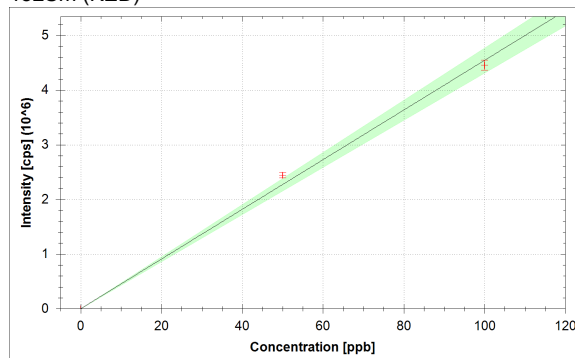
$$f(x) = 48169.3748 \cdot x + 948.9754$$

$$R^2 = 0.9962$$

$$\text{BEC} = 0.020 \text{ ppb}$$

$$\text{LoD} = 0.0022 \text{ ppb}$$

152Sm (KED)



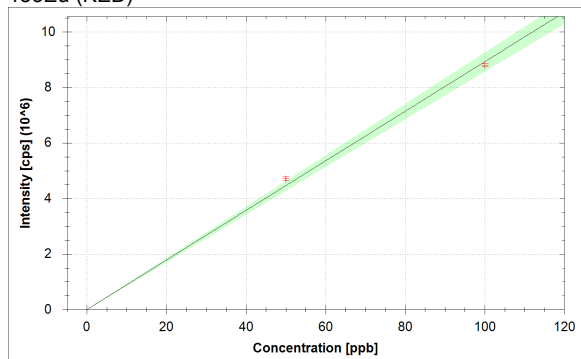
$$f(x) = 45428.9308 \cdot x + 153.2386$$

$$R^2 = 0.9963$$

$$\text{BEC} = 0.003 \text{ ppb}$$

$$\text{LoD} = 0.0011 \text{ ppb}$$

153Eu (KED)



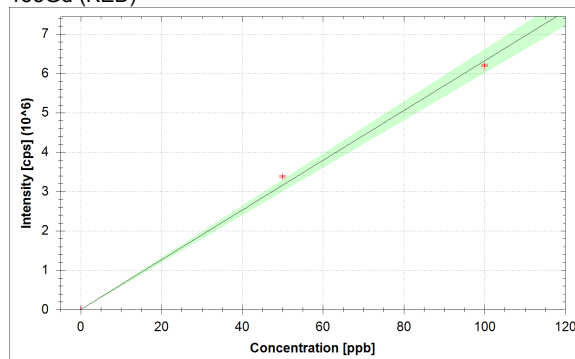
$$f(x) = 89221.1440 \cdot x + 91.1887$$

$$R^2 = 0.9980$$

$$\text{BEC} = 0.001 \text{ ppb}$$

$$\text{LoD} = 0.0005 \text{ ppb}$$

158Gd (KED)



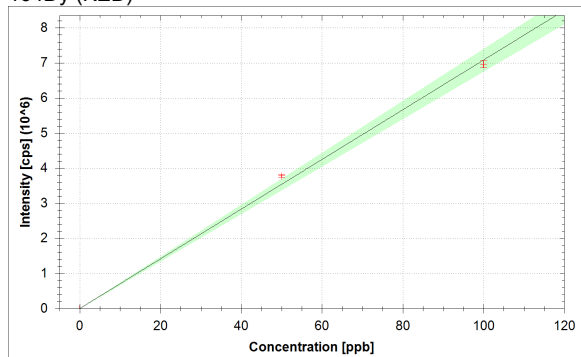
$$f(x) = 63162.8789 \cdot x + 137.8253$$

$$R^2 = 0.9968$$

$$\text{BEC} = 0.002 \text{ ppb}$$

$$\text{LoD} = 0.0004 \text{ ppb}$$

164Dy (KED)



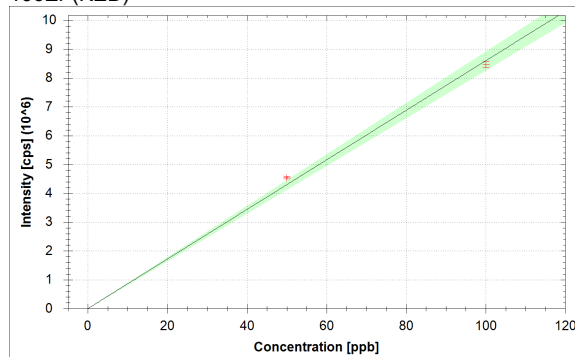
$$f(x) = 70809.0828 \cdot x + 136.7255$$

$$R^2 = 0.9971$$

$$\text{BEC} = 0.002 \text{ ppb}$$

$$\text{LoD} = 0.0004 \text{ ppb}$$

166Er (KED)



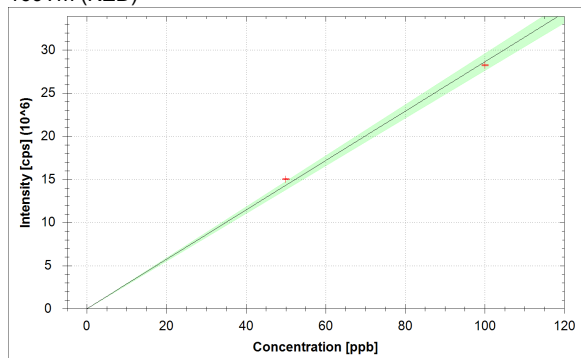
$$f(x) = 85963.2795 \cdot x + 612.3747$$

$$R^2 = 0.9980$$

$$\text{BEC} = 0.007 \text{ ppb}$$

$$\text{LoD} = 0.0010 \text{ ppb}$$

169Tm (KED)



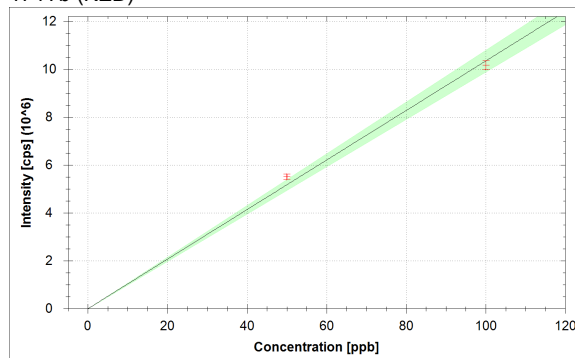
$$f(x) = 286195.4314 \cdot x + 68.7711$$

$$R^2 = 0.9983$$

$$\text{BEC} = 0.000 \text{ ppb}$$

$$\text{LoD} = 0.0002 \text{ ppb}$$

174Yb (KED)



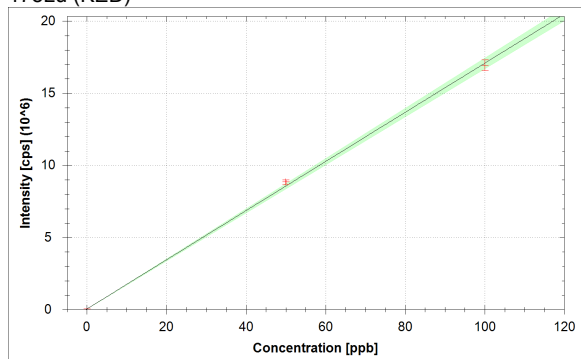
$$f(x) = 103491.8212 \cdot x + 146.7999$$

$$R^2 = 0.9972$$

$$\text{BEC} = 0.001 \text{ ppb}$$

$$\text{LoD} = 0.0007 \text{ ppb}$$

175Lu (KED)



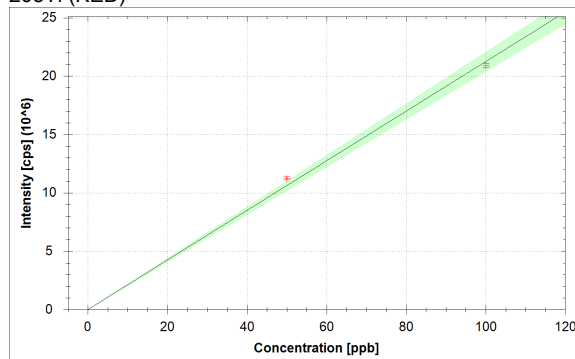
$$f(x) = 170404.3920 \cdot x + 41420.3193$$

$$R^2 = 0.9993$$

$$\text{BEC} = 0.243 \text{ ppb}$$

$$\text{LoD} = 0.0080 \text{ ppb}$$

205Tl (KED)



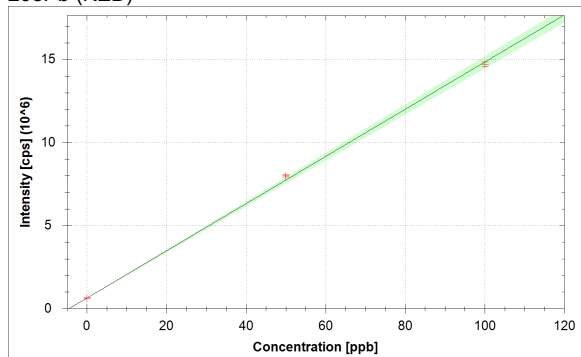
$$f(x) = 212399.9992 \cdot x + 157.6006$$

$$R^2 = 0.9978$$

$$\text{BEC} = 0.001 \text{ ppb}$$

$$\text{LoD} = 0.0004 \text{ ppb}$$

208Pb (KED)



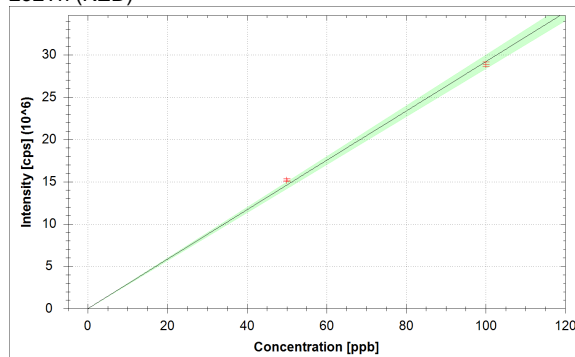
$$f(x) = 142087.0490 \cdot x + 630598.2910$$

$$R^2 = 0.9992$$

$$\text{BEC} = 4.438 \text{ ppb}$$

$$\text{LoD} = 0.0894 \text{ ppb}$$

232Th (KED)

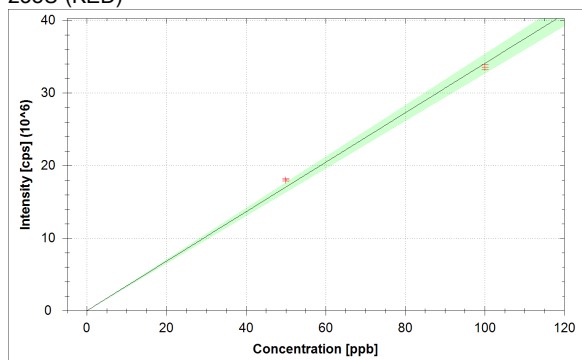


$$f(x) = 291851.8076 \cdot x + 1068.7444$$

$$R^2 = 0.9989$$

$$\text{BEC} = 0.004 \text{ ppb}$$

$$\text{LoD} = 0.0008 \text{ ppb}$$

²³⁸U (KED)

$$f(x) = 340678.9368 \cdot x + 2600.9069$$

$$R^2 = 0.9978$$

$$\text{BEC} = 0.008 \text{ ppb}$$

$$\text{LoD} = 0.0013 \text{ ppb}$$

Standards:

Analysis Index: 3
 Analysis Name: 50+20
 Analysis Type: STD
 Analysis Started at: 9/3/2021 3:54:31 PM
 Standard (Stock): std1
 Standard DF: 1

Category	Concentration average	Concentration RSD	Standard Concentration
6Li (KED)	107.974 %		
9Be (KED)	50.749 ppb	5.3 %	50.000 ppb
11B (KED)	131.980 ppb	3.7 %	50.000 ppb
24Mg (KED)	49.139 ppb	6.9 %	50.000 ppb
27Al (KED)	48.475 ppb	4.4 %	50.000 ppb
45Sc (KED)	105.227 %		
51V (KED)	51.807 ppb	2.2 %	50.000 ppb
52Cr (KED)	52.042 ppb	3.9 %	50.000 ppb
55Mn (KED)	51.755 ppb	3.2 %	50.000 ppb
56Fe (KED)	50.731 ppb	3.4 %	50.000 ppb
58Ni (KED)	51.860 ppb	1.7 %	50.000 ppb
59Co (KED)	52.486 ppb	2.1 %	50.000 ppb
63Cu (KED)	42.581 ppb	2.5 %	50.000 ppb
64Zn (KED)	37.126 ppb	3.8 %	50.000 ppb
69Ga (KED)	53.017 ppb	0.9 %	50.000 ppb
75As (KED)	52.701 ppb	2.1 %	50.000 ppb
80Se (KED)	53.262 ppb	3.0 %	50.000 ppb
85Rb (KED)	52.344 ppb	0.6 %	50.000 ppb
88Sr (KED)	52.930 ppb	0.6 %	50.000 ppb
89Y (KED)	103.806 %		
107Ag (KED)	53.962 ppb	0.7 %	50.000 ppb
114Cd (KED)	52.469 ppb	0.6 %	50.000 ppb
115In (KED)	103.457 %		
133Cs (KED)	52.411 ppb	1.4 %	50.000 ppb
138Ba (KED)	51.605 ppb	2.4 %	50.000 ppb
139La (KED)	51.974 ppb	1.6 %	50.000 ppb
140Ce (KED)	52.338 ppb	2.3 %	50.000 ppb
141Pr (KED)	52.222 ppb	0.9 %	50.000 ppb
142Nd (KED)	53.819 ppb	1.5 %	50.000 ppb
152Sm (KED)	53.794 ppb	2.0 %	50.000 ppb
153Eu (KED)	52.810 ppb	1.5 %	50.000 ppb
158Gd (KED)	53.498 ppb	1.0 %	50.000 ppb
159Tb (KED)	102.701 %		
164Dy (KED)	53.356 ppb	0.9 %	50.000 ppb
166Er (KED)	52.796 ppb	1.0 %	50.000 ppb
169Tm (KED)	52.574 ppb	0.6 %	50.000 ppb
174Yb (KED)	53.313 ppb	2.0 %	50.000 ppb
175Lu (KED)	51.649 ppb	1.6 %	50.000 ppb
205Tl (KED)	52.943 ppb	1.2 %	50.000 ppb
208Pb (KED)	51.811 ppb	0.8 %	50.000 ppb
209Bi (KED)	103.340 %		
232Th (KED)	52.078 ppb	1.3 %	50.000 ppb
238U (KED)	52.914 ppb	0.8 %	50.000 ppb

Standards:

Analysis Index: 4
 Analysis Name: 100+20
 Analysis Type: STD
 Analysis Started at: 9/3/2021 3:58:09 PM
 Standard (Stock): std2
 Standard DF: 1

Category	Concentration average	Concentration RSD	Standard Concentration
6Li (KED)	108.327 %		
9Be (KED)	99.626 ppb	7.0 %	100.000 ppb
11B (KED)	59.010 ppb	15.4 %	100.000 ppb
24Mg (KED)	100.431 ppb	4.6 %	100.000 ppb
27Al (KED)	100.763 ppb	1.1 %	100.000 ppb
45Sc (KED)	103.797 %		
51V (KED)	99.097 ppb	1.0 %	100.000 ppb
52Cr (KED)	98.979 ppb	0.9 %	100.000 ppb
55Mn (KED)	99.123 ppb	0.7 %	100.000 ppb
56Fe (KED)	99.635 ppb	1.4 %	100.000 ppb
58Ni (KED)	99.070 ppb	1.0 %	100.000 ppb
59Co (KED)	98.757 ppb	0.9 %	100.000 ppb
63Cu (KED)	103.709 ppb	1.3 %	100.000 ppb
64Zn (KED)	106.437 ppb	2.8 %	100.000 ppb
69Ga (KED)	98.491 ppb	1.4 %	100.000 ppb
75As (KED)	98.650 ppb	0.8 %	100.000 ppb
80Se (KED)	98.369 ppb	2.6 %	100.000 ppb
85Rb (KED)	98.828 ppb	0.9 %	100.000 ppb
88Sr (KED)	98.535 ppb	1.5 %	100.000 ppb
89Y (KED)	103.920 %		
107Ag (KED)	98.019 ppb	0.9 %	100.000 ppb
114Cd (KED)	98.766 ppb	0.8 %	100.000 ppb
115In (KED)	102.866 %		
133Cs (KED)	98.795 ppb	0.7 %	100.000 ppb
138Ba (KED)	99.198 ppb	1.6 %	100.000 ppb
139La (KED)	99.013 ppb	0.5 %	100.000 ppb
140Ce (KED)	98.831 ppb	0.1 %	100.000 ppb
141Pr (KED)	98.889 ppb	2.3 %	100.000 ppb
142Nd (KED)	98.091 ppb	1.0 %	100.000 ppb
152Sm (KED)	98.103 ppb	2.1 %	100.000 ppb
153Eu (KED)	98.595 ppb	0.6 %	100.000 ppb
158Gd (KED)	98.251 ppb	0.5 %	100.000 ppb
159Tb (KED)	101.752 %		
164Dy (KED)	98.322 ppb	1.4 %	100.000 ppb
166Er (KED)	98.602 ppb	1.2 %	100.000 ppb
169Tm (KED)	98.713 ppb	0.3 %	100.000 ppb
174Yb (KED)	98.343 ppb	1.9 %	100.000 ppb
175Lu (KED)	99.176 ppb	2.3 %	100.000 ppb
205Tl (KED)	98.529 ppb	0.7 %	100.000 ppb
208Pb (KED)	99.095 ppb	1.0 %	100.000 ppb
209Bi (KED)	102.019 %		
232Th (KED)	98.961 ppb	1.0 %	100.000 ppb
238U (KED)	98.543 ppb	1.1 %	100.000 ppb

Sample List Summary:

Instrument ID: iCAP Q

Index:	Label:	Main Runs:	Survey Runs:	Start Time:	User name:
1	water	3	0	9/3/2021 3:47:44 PM	WINDOWS-UPCI4ER\Administrator
2	blk	3	0	9/3/2021 3:50:43 PM	WINDOWS-UPCI4ER\Administrator
3	50+20	3	0	9/3/2021 3:54:31 PM	WINDOWS-UPCI4ER\Administrator
4	100+20	3	0	9/3/2021 3:58:09 PM	WINDOWS-UPCI4ER\Administrator
5	338jian	3	0	9/3/2021 4:02:05 PM	WINDOWS-UPCI4ER\Administrator
6	322jian	3	0	9/3/2021 4:05:52 PM	WINDOWS-UPCI4ER\Administrator
7	334jian	3	0	9/3/2021 4:09:47 PM	WINDOWS-UPCI4ER\Administrator
8	340jian	3	0	9/3/2021 4:13:14 PM	WINDOWS-UPCI4ER\Administrator
9	336jian	3	0	9/3/2021 4:16:41 PM	WINDOWS-UPCI4ER\Administrator
10	332jian	3	0	9/3/2021 4:20:15 PM	WINDOWS-UPCI4ER\Administrator
11	330jian	3	0	9/3/2021 4:23:34 PM	WINDOWS-UPCI4ER\Administrator
12	326jian	3	0	9/3/2021 4:26:51 PM	WINDOWS-UPCI4ER\Administrator
13	00026jian	3	0	9/3/2021 4:30:18 PM	WINDOWS-UPCI4ER\Administrator
14	178607jian	3	0	9/3/2021 4:33:38 PM	WINDOWS-UPCI4ER\Administrator
15	178578jian	3	0	9/3/2021 4:37:06 PM	WINDOWS-UPCI4ER\Administrator
16	00029jian	3	0	9/3/2021 4:40:34 PM	WINDOWS-UPCI4ER\Administrator
17	178588jian	3	0	9/3/2021 4:44:04 PM	WINDOWS-UPCI4ER\Administrator
18	00025jian	3	0	9/3/2021 4:47:23 PM	WINDOWS-UPCI4ER\Administrator
19	178606jian	3	0	9/3/2021 4:50:50 PM	WINDOWS-UPCI4ER\Administrator
20	00027jian	3	0	9/3/2021 4:54:21 PM	WINDOWS-UPCI4ER\Administrator
21	179338jian	3	0	9/3/2021 4:57:41 PM	WINDOWS-UPCI4ER\Administrator
22	00028jian	3	0	9/3/2021 5:01:07 PM	WINDOWS-UPCI4ER\Administrator
23	921144279jian	3	0	9/3/2021 5:04:48 PM	WINDOWS-UPCI4ER\Administrator
24	921057709jian	3	0	9/3/2021 5:08:10 PM	WINDOWS-UPCI4ER\Administrator

Sample Summary

Instrument ID: iCAP Q

Analysis index: 1

Analysis name: water

Analysis started at: 9/3/2021 3:47:44 PM

User name: WINDOWS-UPCI4ER\Administrator

Category	Concentration average	Concentration RSD
6Li (KED)	0.000 %	
11B (KED)	-Infinity ppb	
24Mg (KED)	Infinity ppb	
27Al (KED)	42.975 ppb	126.0 %
45Sc (KED)	0.079 %	27.0 %
51V (KED)	0.884 ppb	69.6 %
52Cr (KED)	46.828 ppb	23.7 %
55Mn (KED)	38.440 ppb	25.0 %
56Fe (KED)	22.458 ppb	40.0 %
58Ni (KED)	278.147 ppb	27.1 %
59Co (KED)	6.116 ppb	26.6 %
63Cu (KED)	Infinity ppb	
64Zn (KED)	Infinity ppb	
69Ga (KED)	Infinity ppb	
75As (KED)	Infinity ppb	
80Se (KED)	Infinity ppb	
85Rb (KED)	Infinity ppb	
88Sr (KED)	Infinity ppb	
89Y (KED)	0.000 %	
114Cd (KED)	Infinity ppb	
115In (KED)	0.000 %	86.6 %
138Ba (KED)	Infinity ppb	
159Tb (KED)	0.000 %	
205Tl (KED)	45.697 ppb	13.0 %
208Pb (KED)	77.339 ppb	16.0 %
209Bi (KED)	0.000 %	32.7 %
232Th (KED)	-0.004 ppb	0.0 %
238U (KED)	3.554 ppb	118.7 %

Category	Concentration average	Intensity average	Intensity RSD
6Li (KED)	0.000 %	0 cps	
9Be (KED)		0 cps	
11B (KED)	-Infinity ppb	122 cps	19.2 %
24Mg (KED)	Infinity ppb	581 cps	3.5 %
27Al (KED)	42.975 ppb	6 cps	91.7 %
45Sc (KED)	0.079 %	31 cps	27.0 %
51V (KED)	0.884 ppb	4 cps	43.3 %
52Cr (KED)	46.828 ppb	387 cps	6.2 %
55Mn (KED)	38.440 ppb	164 cps	20.4 %
56Fe (KED)	22.458 ppb	211 cps	6.4 %
58Ni (KED)	278.147 ppb	2,636 cps	0.8 %
59Co (KED)	6.116 ppb	97 cps	0.0 %
63Cu (KED)	Infinity ppb	52 cps	38.5 %
64Zn (KED)	Infinity ppb	134 cps	10.3 %
69Ga (KED)	Infinity ppb	27 cps	57.3 %
75As (KED)	Infinity ppb	9 cps	57.3 %
80Se (KED)	Infinity ppb	983 cps	9.2 %
85Rb (KED)	Infinity ppb	27 cps	45.1 %
88Sr (KED)	Infinity ppb	226 cps	6.0 %
89Y (KED)	0.000 %	0 cps	

Category	Concentration average	Intensity average	Intensity RSD
107Ag (KED)		1 cps	173.2 %
114Cd (KED)	Infinity ppb	1 cps	173.2 %
115In (KED)	0.000 %	2 cps	86.6 %
133Cs (KED)		3 cps	100.0 %
138Ba (KED)	Infinity ppb	628 cps	10.4 %
139La (KED)		2 cps	86.6 %
140Ce (KED)		2 cps	173.2 %
141Pr (KED)		0 cps	
142Nd (KED)		1 cps	173.2 %
152Sm (KED)		0 cps	
153Eu (KED)		0 cps	
158Gd (KED)		0 cps	
159Tb (KED)	0.000 %	0 cps	
164Dy (KED)		0 cps	
166Er (KED)		0 cps	
169Tm (KED)		0 cps	
174Yb (KED)		0 cps	
175Lu (KED)		0 cps	
205Tl (KED)	45.697 ppb	36 cps	30.1 %
208Pb (KED)	77.339 ppb	44 cps	45.2 %
209Bi (KED)	0.000 %	16 cps	32.7 %
232Th (KED)	-0.004 ppb	0 cps	
238U (KED)	3.554 ppb	3 cps	100.0 %

Sample Summary

Instrument ID: iCAP Q

Analysis index: 2

Analysis name: blk

Analysis started at: 9/3/2021 3:50:43 PM

User name: WINDOWS-UPCI4ER\Administrator

Category	Concentration average	Concentration RSD
6Li (KED)	100.000 %	
9Be (KED)	0.000 ppb	
11B (KED)	0.000 ppb	0.1 %
24Mg (KED)	0.000 ppb	0.1 %
27Al (KED)	0.000 ppb	0.1 %
45Sc (KED)	100.000 %	
51V (KED)	0.000 ppb	0.2 %
52Cr (KED)	0.000 ppb	0.0 %
55Mn (KED)	0.000 ppb	0.1 %
56Fe (KED)	0.000 ppb	0.0 %
58Ni (KED)	0.000 ppb	0.0 %
59Co (KED)	0.000 ppb	0.2 %
63Cu (KED)	0.000 ppb	0.0 %
64Zn (KED)	0.000 ppb	0.0 %
69Ga (KED)	0.000 ppb	0.0 %
75As (KED)	0.000 ppb	0.3 %
80Se (KED)	0.000 ppb	0.1 %
85Rb (KED)	0.000 ppb	0.0 %
88Sr (KED)	0.000 ppb	0.0 %
89Y (KED)	100.000 %	
107Ag (KED)	0.000 ppb	0.2 %
114Cd (KED)	0.000 ppb	0.0 %
115In (KED)	100.000 %	
133Cs (KED)	0.000 ppb	0.1 %
138Ba (KED)	0.000 ppb	0.0 %
139La (KED)	0.000 ppb	0.0 %
140Ce (KED)	0.000 ppb	0.1 %
141Pr (KED)	0.000 ppb	0.1 %
142Nd (KED)	0.000 ppb	0.0 %
152Sm (KED)	0.000 ppb	0.1 %
153Eu (KED)	0.000 ppb	0.2 %
158Gd (KED)	0.000 ppb	0.1 %
159Tb (KED)	100.000 %	
164Dy (KED)	0.000 ppb	0.1 %
166Er (KED)	0.000 ppb	0.0 %
169Tm (KED)	0.000 ppb	0.3 %
174Yb (KED)	0.000 ppb	0.2 %
175Lu (KED)	0.000 ppb	0.0 %
205Tl (KED)	0.000 ppb	0.2 %
208Pb (KED)	0.000 ppb	0.0 %
209Bi (KED)	100.000 %	
232Th (KED)	0.000 ppb	0.1 %
238U (KED)	0.000 ppb	0.1 %

Category	Concentration average	Intensity average	Intensity RSD
6Li (KED)	100.000 %	2,522 cps	5.3 %
9Be (KED)	0.000 ppb	0 cps	
11B (KED)	0.000 ppb	8,880 cps	2.3 %
24Mg (KED)	0.000 ppb	4,599 cps	1.4 %
27Al (KED)	0.000 ppb	1,917 cps	6.5 %

Category	Concentration average	Intensity average	Intensity RSD
45Sc (KED)	100.000 %	39,371 cps	1.0 %
51V (KED)	0.000 ppb	96 cps	23.2 %
52Cr (KED)	0.000 ppb	3,557 cps	3.3 %
55Mn (KED)	0.000 ppb	2,361 cps	4.6 %
56Fe (KED)	0.000 ppb	72,877 cps	2.9 %
58Ni (KED)	0.000 ppb	17,908 cps	1.1 %
59Co (KED)	0.000 ppb	341 cps	14.7 %
63Cu (KED)	0.000 ppb	347,001 cps	2.7 %
64Zn (KED)	0.000 ppb	121,361 cps	0.4 %
69Ga (KED)	0.000 ppb	2,949 cps	1.0 %
75As (KED)	0.000 ppb	123 cps	25.8 %
80Se (KED)	0.000 ppb	1,056 cps	4.0 %
85Rb (KED)	0.000 ppb	1,261 cps	2.6 %
88Sr (KED)	0.000 ppb	2,301 cps	2.5 %
89Y (KED)	100.000 %	387,495 cps	2.3 %
107Ag (KED)	0.000 ppb	173 cps	18.9 %
114Cd (KED)	0.000 ppb	1,777 cps	2.9 %
115In (KED)	100.000 %	779,774 cps	0.7 %
133Cs (KED)	0.000 ppb	382 cps	11.8 %
138Ba (KED)	0.000 ppb	82,052 cps	2.3 %
139La (KED)	0.000 ppb	1,136 cps	3.3 %
140Ce (KED)	0.000 ppb	3,146 cps	5.5 %
141Pr (KED)	0.000 ppb	504 cps	12.4 %
142Nd (KED)	0.000 ppb	949 cps	3.5 %
152Sm (KED)	0.000 ppb	153 cps	11.5 %
153Eu (KED)	0.000 ppb	91 cps	14.8 %
158Gd (KED)	0.000 ppb	138 cps	5.0 %
159Tb (KED)	100.000 %	4,330,050 cps	0.9 %
164Dy (KED)	0.000 ppb	137 cps	6.5 %
166Er (KED)	0.000 ppb	612 cps	4.0 %
169Tm (KED)	0.000 ppb	69 cps	34.0 %
174Yb (KED)	0.000 ppb	147 cps	15.9 %
175Lu (KED)	0.000 ppb	41,418 cps	0.4 %
205Tl (KED)	0.000 ppb	158 cps	20.5 %
208Pb (KED)	0.000 ppb	630,619 cps	1.9 %
209Bi (KED)	100.000 %	4,199,819 cps	1.5 %
232Th (KED)	0.000 ppb	1,069 cps	7.7 %
238U (KED)	0.000 ppb	2,600 cps	4.9 %

Sample Summary

Instrument ID: iCAP Q

Analysis index: 3

Analysis name: 50+20

Analysis started at: 9/3/2021 3:54:31 PM

User name: WINDOWS-UPCI4ER\Administrator

Category	Concentration average	Concentration RSD
6Li (KED)	107.974 %	
9Be (KED)	50.749 ppb	5.3 %
11B (KED)	131.980 ppb	3.7 %
24Mg (KED)	49.139 ppb	6.9 %
27Al (KED)	48.475 ppb	4.4 %
45Sc (KED)	105.227 %	
51V (KED)	51.807 ppb	2.2 %
52Cr (KED)	52.042 ppb	3.9 %
55Mn (KED)	51.755 ppb	3.2 %
56Fe (KED)	50.731 ppb	3.4 %
58Ni (KED)	51.860 ppb	1.7 %
59Co (KED)	52.486 ppb	2.1 %
63Cu (KED)	42.581 ppb	2.5 %
64Zn (KED)	37.126 ppb	3.8 %
69Ga (KED)	53.017 ppb	0.9 %
75As (KED)	52.701 ppb	2.1 %
80Se (KED)	53.262 ppb	3.0 %
85Rb (KED)	52.344 ppb	0.6 %
88Sr (KED)	52.930 ppb	0.6 %
89Y (KED)	103.806 %	
107Ag (KED)	53.962 ppb	0.7 %
114Cd (KED)	52.469 ppb	0.6 %
115In (KED)	103.457 %	
133Cs (KED)	52.411 ppb	1.4 %
138Ba (KED)	51.605 ppb	2.4 %
139La (KED)	51.974 ppb	1.6 %
140Ce (KED)	52.338 ppb	2.3 %
141Pr (KED)	52.222 ppb	0.9 %
142Nd (KED)	53.819 ppb	1.5 %
152Sm (KED)	53.794 ppb	2.0 %
153Eu (KED)	52.810 ppb	1.5 %
158Gd (KED)	53.498 ppb	1.0 %
159Tb (KED)	102.701 %	
164Dy (KED)	53.356 ppb	0.9 %
166Er (KED)	52.796 ppb	1.0 %
169Tm (KED)	52.574 ppb	0.6 %
174Yb (KED)	53.313 ppb	2.0 %
175Lu (KED)	51.649 ppb	1.6 %
205Tl (KED)	52.943 ppb	1.2 %
208Pb (KED)	51.811 ppb	0.8 %
209Bi (KED)	103.340 %	
232Th (KED)	52.078 ppb	1.3 %
238U (KED)	52.914 ppb	0.8 %

Category	Concentration average	Intensity average	Intensity RSD
6Li (KED)	107.974 %	2,724 cps	4.2 %
9Be (KED)	50.749 ppb	6,461 cps	2.6 %
11B (KED)	131.980 ppb	4,273 cps	1.4 %
24Mg (KED)	49.139 ppb	25,835 cps	1.8 %
27Al (KED)	48.475 ppb	7,095 cps	1.8 %

Category	Concentration average	Intensity average	Intensity RSD
45Sc (KED)	105.227 %	41,429 cps	1.8 %
51V (KED)	51.807 ppb	382,507 cps	0.5 %
52Cr (KED)	52.042 ppb	595,414 cps	2.1 %
55Mn (KED)	51.755 ppb	303,594 cps	1.4 %
56Fe (KED)	50.731 ppb	574,076 cps	1.2 %
58Ni (KED)	51.860 ppb	702,421 cps	0.2 %
59Co (KED)	52.486 ppb	1,156,417 cps	1.7 %
63Cu (KED)	42.581 ppb	868,355 cps	1.3 %
64Zn (KED)	37.126 ppb	231,649 cps	1.4 %
69Ga (KED)	53.017 ppb	300,220 cps	0.7 %
75As (KED)	52.701 ppb	66,471 cps	1.8 %
80Se (KED)	53.262 ppb	21,489 cps	2.7 %
85Rb (KED)	52.344 ppb	288,481 cps	0.3 %
88Sr (KED)	52.930 ppb	411,776 cps	0.9 %
89Y (KED)	103.806 %	402,244 cps	0.3 %
107Ag (KED)	53.962 ppb	2,761,974 cps	1.1 %
114Cd (KED)	52.469 ppb	1,018,342 cps	0.7 %
115In (KED)	103.457 %	806,727 cps	0.5 %
133Cs (KED)	52.411 ppb	1,595,744 cps	1.3 %
138Ba (KED)	51.605 ppb	2,251,800 cps	1.1 %
139La (KED)	51.974 ppb	4,443,833 cps	0.2 %
140Ce (KED)	52.338 ppb	6,008,333 cps	0.9 %
141Pr (KED)	52.222 ppb	6,348,621 cps	0.6 %
142Nd (KED)	53.819 ppb	2,663,110 cps	0.9 %
152Sm (KED)	53.794 ppb	2,509,487 cps	0.7 %
153Eu (KED)	52.810 ppb	4,838,687 cps	1.2 %
158Gd (KED)	53.498 ppb	3,470,308 cps	1.2 %
159Tb (KED)	102.701 %	4,446,992 cps	1.4 %
164Dy (KED)	53.356 ppb	3,880,166 cps	1.5 %
166Er (KED)	52.796 ppb	4,661,580 cps	1.4 %
169Tm (KED)	52.574 ppb	15,452,260 cps	1.0 %
174Yb (KED)	53.313 ppb	5,665,648 cps	0.8 %
175Lu (KED)	51.649 ppb	9,080,233 cps	0.6 %
205Tl (KED)	52.943 ppb	11,621,616 cps	2.1 %
208Pb (KED)	51.811 ppb	8,259,424 cps	1.6 %
209Bi (KED)	103.340 %	4,340,097 cps	0.9 %
232Th (KED)	52.078 ppb	15,706,859 cps	0.5 %
238U (KED)	52.914 ppb	18,631,134 cps	0.9 %

Sample Summary

Instrument ID: iCAP Q

Analysis index: 4

Analysis name: 100+20

Analysis started at: 9/3/2021 3:58:09 PM

User name: WINDOWS-UPCI4ER\Administrator

Category	Concentration average	Concentration RSD
6Li (KED)	108.327 %	
9Be (KED)	99.626 ppb	7.0 %
11B (KED)	59.010 ppb	15.4 %
24Mg (KED)	100.431 ppb	4.6 %
27Al (KED)	100.763 ppb	1.1 %
45Sc (KED)	103.797 %	
51V (KED)	99.097 ppb	1.0 %
52Cr (KED)	98.979 ppb	0.9 %
55Mn (KED)	99.123 ppb	0.7 %
56Fe (KED)	99.635 ppb	1.4 %
58Ni (KED)	99.070 ppb	1.0 %
59Co (KED)	98.757 ppb	0.9 %
63Cu (KED)	103.709 ppb	1.3 %
64Zn (KED)	106.437 ppb	2.8 %
69Ga (KED)	98.491 ppb	1.4 %
75As (KED)	98.650 ppb	0.8 %
80Se (KED)	98.369 ppb	2.6 %
85Rb (KED)	98.828 ppb	0.9 %
88Sr (KED)	98.535 ppb	1.5 %
89Y (KED)	103.920 %	
107Ag (KED)	98.019 ppb	0.9 %
114Cd (KED)	98.766 ppb	0.8 %
115In (KED)	102.866 %	
133Cs (KED)	98.795 ppb	0.7 %
138Ba (KED)	99.198 ppb	1.6 %
139La (KED)	99.013 ppb	0.5 %
140Ce (KED)	98.831 ppb	0.1 %
141Pr (KED)	98.889 ppb	2.3 %
142Nd (KED)	98.091 ppb	1.0 %
152Sm (KED)	98.103 ppb	2.1 %
153Eu (KED)	98.595 ppb	0.6 %
158Gd (KED)	98.251 ppb	0.5 %
159Tb (KED)	101.752 %	
164Dy (KED)	98.322 ppb	1.4 %
166Er (KED)	98.602 ppb	1.2 %
169Tm (KED)	98.713 ppb	0.3 %
174Yb (KED)	98.343 ppb	1.9 %
175Lu (KED)	99.176 ppb	2.3 %
205Tl (KED)	98.529 ppb	0.7 %
208Pb (KED)	99.095 ppb	1.0 %
209Bi (KED)	102.019 %	
232Th (KED)	98.961 ppb	1.0 %
238U (KED)	98.543 ppb	1.1 %

Category	Concentration average	Intensity average	Intensity RSD
6Li (KED)	108.327 %	2,733 cps	4.1 %
9Be (KED)	99.626 ppb	12,716 cps	2.7 %
11B (KED)	59.010 ppb	7,238 cps	0.8 %
24Mg (KED)	100.431 ppb	47,786 cps	0.1 %
27Al (KED)	100.763 ppb	12,407 cps	0.8 %

Category	Concentration average	Intensity average	Intensity RSD
45Sc (KED)	103.797 %	40,866 cps	0.3 %
51V (KED)	99.097 ppb	721,813 cps	0.8 %
52Cr (KED)	98.979 ppb	1,114,220 cps	0.6 %
55Mn (KED)	99.123 ppb	571,522 cps	0.5 %
56Fe (KED)	99.635 ppb	1,039,622 cps	1.3 %
58Ni (KED)	99.070 ppb	1,306,988 cps	1.0 %
59Co (KED)	98.757 ppb	2,146,360 cps	1.0 %
63Cu (KED)	103.709 ppb	1,599,402 cps	0.4 %
64Zn (KED)	106.437 ppb	429,288 cps	1.2 %
69Ga (KED)	98.491 ppb	555,674 cps	0.7 %
75As (KED)	98.650 ppb	124,449 cps	0.2 %
80Se (KED)	98.369 ppb	38,798 cps	2.0 %
85Rb (KED)	98.828 ppb	544,087 cps	0.4 %
88Sr (KED)	98.535 ppb	765,278 cps	0.8 %
89Y (KED)	103.920 %	402,685 cps	0.8 %
107Ag (KED)	98.019 ppb	4,988,118 cps	0.9 %
114Cd (KED)	98.766 ppb	1,904,335 cps	0.9 %
115In (KED)	102.866 %	802,120 cps	0.0 %
133Cs (KED)	98.795 ppb	2,990,534 cps	0.7 %
138Ba (KED)	99.198 ppb	4,212,117 cps	0.8 %
139La (KED)	99.013 ppb	8,387,989 cps	1.2 %
140Ce (KED)	98.831 ppb	11,240,490 cps	0.8 %
141Pr (KED)	98.889 ppb	11,910,039 cps	1.7 %
142Nd (KED)	98.091 ppb	4,808,500 cps	0.3 %
152Sm (KED)	98.103 ppb	4,534,517 cps	1.3 %
153Eu (KED)	98.595 ppb	8,950,730 cps	0.1 %
158Gd (KED)	98.251 ppb	6,314,815 cps	1.2 %
159Tb (KED)	101.752 %	4,405,924 cps	0.7 %
164Dy (KED)	98.322 ppb	7,083,745 cps	0.7 %
166Er (KED)	98.602 ppb	8,624,925 cps	0.9 %
169Tm (KED)	98.713 ppb	28,746,770 cps	1.0 %
174Yb (KED)	98.343 ppb	10,355,914 cps	1.8 %
175Lu (KED)	99.176 ppb	17,236,353 cps	1.5 %
205Tl (KED)	98.529 ppb	21,349,226 cps	0.3 %
208Pb (KED)	99.095 ppb	15,006,870 cps	0.3 %
209Bi (KED)	102.019 %	4,284,634 cps	1.0 %
232Th (KED)	98.961 ppb	29,464,841 cps	0.7 %
238U (KED)	98.543 ppb	34,252,203 cps	1.5 %

Sample Summary

Instrument ID: iCAP Q

Analysis index: 5

Analysis name: 338jian

Analysis started at: 9/3/2021 4:02:05 PM

User name: WINDOWS-UPCI4ER\Administrator

Category	Concentration average	Concentration RSD
6Li (KED)	122.029 %	1.0 %
9Be (KED)	0.031 ppb	113.9 %
11B (KED)	230.977 ppb	0.4 %
24Mg (KED)	223.864 ppb	1.2 %
27Al (KED)	230.319 ppb	1.6 %
45Sc (KED)	112.782 %	2.1 %
51V (KED)	0.491 ppb	25.8 %
52Cr (KED)	2.916 ppb	12.9 %
55Mn (KED)	5.590 ppb	6.9 %
56Fe (KED)	250.740 ppb	0.7 %
58Ni (KED)	0.734 ppb	35.6 %
59Co (KED)	0.337 ppb	74.2 %
63Cu (KED)	-20.353 ppb	0.5 %
64Zn (KED)	236.229 ppb	0.3 %
69Ga (KED)	0.237 ppb	80.2 %
75As (KED)	0.180 ppb	69.0 %
80Se (KED)	0.200 ppb	110.0 %
85Rb (KED)	1.358 ppb	9.1 %
88Sr (KED)	3.620 ppb	4.6 %
89Y (KED)	105.703 %	1.4 %
107Ag (KED)	0.132 ppb	49.9 %
114Cd (KED)	0.010 ppb	485.1 %
115In (KED)	100.219 %	0.7 %
133Cs (KED)	0.074 ppb	59.8 %
138Ba (KED)	0.989 ppb	7.1 %
139La (KED)	0.214 ppb	15.9 %
140Ce (KED)	0.413 ppb	4.7 %
141Pr (KED)	0.062 ppb	38.1 %
142Nd (KED)	0.261 ppb	6.8 %
152Sm (KED)	0.053 ppb	33.4 %
153Eu (KED)	0.020 ppb	87.3 %
158Gd (KED)	0.042 ppb	34.5 %
159Tb (KED)	103.990 %	2.3 %
164Dy (KED)	0.032 ppb	42.6 %
166Er (KED)	0.019 ppb	54.8 %
169Tm (KED)	0.010 ppb	89.0 %
174Yb (KED)	0.016 ppb	43.1 %
175Lu (KED)	-0.044 ppb	4.8 %
205Tl (KED)	0.017 ppb	44.4 %
208Pb (KED)	-3.754 ppb	0.6 %
209Bi (KED)	90.625 %	1.2 %
232Th (KED)	0.167 ppb	23.3 %
238U (KED)	0.034 ppb	26.7 %

Category	Concentration average	Intensity average	Intensity RSD
6Li (KED)	122.029 %	3,078 cps	1.0 %
9Be (KED)	0.031 ppb	4 cps	114.6 %
11B (KED)	230.977 ppb	318 cps	13.7 %
24Mg (KED)	223.864 ppb	113,217 cps	1.9 %
27Al (KED)	230.319 ppb	28,034 cps	2.0 %

Category	Concentration average	Intensity average	Intensity RSD
45Sc (KED)	112.782 %	44,403 cps	2.1 %
51V (KED)	0.491 ppb	3,983 cps	22.9 %
52Cr (KED)	2.916 ppb	39,492 cps	9.4 %
55Mn (KED)	5.590 ppb	37,498 cps	4.3 %
56Fe (KED)	250.740 ppb	2,718,167 cps	2.3 %
58Ni (KED)	0.734 ppb	30,524 cps	9.9 %
59Co (KED)	0.337 ppb	8,267 cps	68.6 %
63Cu (KED)	-20.353 ppb	119,591 cps	0.9 %
64Zn (KED)	236.229 ppb	812,745 cps	1.6 %
69Ga (KED)	0.237 ppb	4,463 cps	22.9 %
75As (KED)	0.180 ppb	360 cps	42.7 %
80Se (KED)	0.200 ppb	1,195 cps	7.1 %
85Rb (KED)	1.358 ppb	8,912 cps	6.6 %
88Sr (KED)	3.620 ppb	30,931 cps	3.0 %
89Y (KED)	105.703 %	409,593 cps	1.4 %
107Ag (KED)	0.132 ppb	6,720 cps	48.4 %
114Cd (KED)	0.010 ppb	1,968 cps	46.3 %
115In (KED)	100.219 %	781,480 cps	0.7 %
133Cs (KED)	0.074 ppb	2,556 cps	50.6 %
138Ba (KED)	0.989 ppb	127,380 cps	1.0 %
139La (KED)	0.214 ppb	19,751 cps	16.5 %
140Ce (KED)	0.413 ppb	51,321 cps	6.1 %
141Pr (KED)	0.062 ppb	8,244 cps	37.3 %
142Nd (KED)	0.261 ppb	14,075 cps	7.3 %
152Sm (KED)	0.053 ppb	2,676 cps	33.2 %
153Eu (KED)	0.020 ppb	1,962 cps	84.6 %
158Gd (KED)	0.042 ppb	2,901 cps	34.6 %
159Tb (KED)	103.990 %	4,502,835 cps	2.3 %
164Dy (KED)	0.032 ppb	2,503 cps	41.9 %
166Er (KED)	0.019 ppb	2,368 cps	41.8 %
169Tm (KED)	0.010 ppb	3,205 cps	88.6 %
174Yb (KED)	0.016 ppb	1,895 cps	41.3 %
175Lu (KED)	-0.044 ppb	35,221 cps	3.3 %
205Tl (KED)	0.017 ppb	3,466 cps	42.7 %
208Pb (KED)	-3.754 ppb	88,085 cps	2.1 %
209Bi (KED)	90.625 %	3,806,076 cps	1.2 %
232Th (KED)	0.167 ppb	45,252 cps	23.2 %
238U (KED)	0.034 ppb	12,898 cps	22.0 %

Sample Summary

Instrument ID: iCAP Q

Analysis index: 6

Analysis name: 322jian

Analysis started at: 9/3/2021 4:05:52 PM

User name: WINDOWS-UPCI4ER\Administrator

Category	Concentration average	Concentration RSD
6Li (KED)	131.017 %	3.6 %
9Be (KED)	0.028 ppb	39.6 %
11B (KED)	228.366 ppb	0.2 %
24Mg (KED)	277.158 ppb	2.1 %
27Al (KED)	274.590 ppb	1.7 %
45Sc (KED)	119.937 %	1.6 %
51V (KED)	0.469 ppb	1.8 %
52Cr (KED)	1.829 ppb	0.6 %
55Mn (KED)	5.736 ppb	1.7 %
56Fe (KED)	282.768 ppb	0.8 %
58Ni (KED)	0.238 ppb	14.2 %
59Co (KED)	0.167 ppb	6.2 %
63Cu (KED)	-19.960 ppb	1.5 %
64Zn (KED)	216.007 ppb	2.4 %
69Ga (KED)	0.179 ppb	6.3 %
75As (KED)	0.117 ppb	39.6 %
80Se (KED)	0.913 ppb	23.9 %
85Rb (KED)	1.268 ppb	1.7 %
88Sr (KED)	3.885 ppb	2.6 %
89Y (KED)	106.892 %	0.9 %
107Ag (KED)	0.176 ppb	60.2 %
114Cd (KED)	0.109 ppb	72.7 %
115In (KED)	98.063 %	0.2 %
133Cs (KED)	0.086 ppb	84.1 %
138Ba (KED)	0.692 ppb	19.4 %
139La (KED)	0.237 ppb	18.0 %
140Ce (KED)	0.473 ppb	8.1 %
141Pr (KED)	0.072 ppb	47.5 %
142Nd (KED)	0.283 ppb	9.3 %
152Sm (KED)	0.048 ppb	45.6 %
153Eu (KED)	0.020 ppb	103.9 %
158Gd (KED)	0.044 ppb	39.7 %
159Tb (KED)	99.659 %	2.5 %
164Dy (KED)	0.029 ppb	42.9 %
166Er (KED)	0.016 ppb	63.5 %
169Tm (KED)	0.008 ppb	121.1 %
174Yb (KED)	0.015 ppb	63.1 %
175Lu (KED)	-0.063 ppb	7.7 %
205Tl (KED)	0.011 ppb	57.1 %
208Pb (KED)	-3.721 ppb	0.3 %
209Bi (KED)	86.001 %	0.8 %
232Th (KED)	0.092 ppb	9.4 %
238U (KED)	0.023 ppb	23.0 %

Category	Concentration average	Intensity average	Intensity RSD
6Li (KED)	131.017 %	3,305 cps	3.6 %
9Be (KED)	0.028 ppb	4 cps	43.3 %
11B (KED)	228.366 ppb	469 cps	3.4 %
24Mg (KED)	277.158 ppb	148,984 cps	2.0 %
27Al (KED)	274.590 ppb	35,098 cps	0.2 %

Category	Concentration average	Intensity average	Intensity RSD
45Sc (KED)	119.937 %	47,220 cps	1.6 %
51V (KED)	0.469 ppb	4,060 cps	0.3 %
52Cr (KED)	1.829 ppb	27,976 cps	1.3 %
55Mn (KED)	5.736 ppb	40,885 cps	1.7 %
56Fe (KED)	282.768 ppb	3,248,447 cps	1.0 %
58Ni (KED)	0.238 ppb	25,055 cps	0.9 %
59Co (KED)	0.167 ppb	4,604 cps	5.9 %
63Cu (KED)	-19.960 ppb	125,773 cps	2.6 %
64Zn (KED)	216.007 ppb	762,538 cps	1.2 %
69Ga (KED)	0.179 ppb	4,190 cps	1.1 %
75As (KED)	0.117 ppb	284 cps	21.9 %
80Se (KED)	0.913 ppb	1,489 cps	5.1 %
85Rb (KED)	1.268 ppb	8,513 cps	0.8 %
88Sr (KED)	3.885 ppb	33,406 cps	3.0 %
89Y (KED)	106.892 %	414,201 cps	0.9 %
107Ag (KED)	0.176 ppb	8,707 cps	58.9 %
114Cd (KED)	0.109 ppb	3,738 cps	38.8 %
115In (KED)	98.063 %	764,667 cps	0.2 %
133Cs (KED)	0.086 ppb	2,845 cps	73.0 %
138Ba (KED)	0.692 ppb	109,964 cps	5.2 %
139La (KED)	0.237 ppb	20,859 cps	18.5 %
140Ce (KED)	0.473 ppb	55,838 cps	9.0 %
141Pr (KED)	0.072 ppb	9,002 cps	46.6 %
142Nd (KED)	0.283 ppb	14,541 cps	9.7 %
152Sm (KED)	0.048 ppb	2,330 cps	44.3 %
153Eu (KED)	0.020 ppb	1,877 cps	100.2 %
158Gd (KED)	0.044 ppb	2,890 cps	39.6 %
159Tb (KED)	99.659 %	4,315,292 cps	2.5 %
164Dy (KED)	0.029 ppb	2,210 cps	42.0 %
166Er (KED)	0.016 ppb	2,017 cps	46.0 %
169Tm (KED)	0.008 ppb	2,364 cps	118.8 %
174Yb (KED)	0.015 ppb	1,654 cps	59.2 %
175Lu (KED)	-0.063 ppb	30,517 cps	3.6 %
205Tl (KED)	0.011 ppb	2,169 cps	53.5 %
208Pb (KED)	-3.721 ppb	87,568 cps	0.8 %
209Bi (KED)	86.001 %	3,611,871 cps	0.8 %
232Th (KED)	0.092 ppb	23,964 cps	9.3 %
238U (KED)	0.023 ppb	9,018 cps	17.3 %

Sample Summary

Instrument ID: iCAP Q

Analysis index: 7

Analysis name: 334jian

Analysis started at: 9/3/2021 4:09:47 PM

User name: WINDOWS-UPCI4ER\Administrator

Category	Concentration average	Concentration RSD
6Li (KED)	135.071 %	4.4 %
9Be (KED)	0.055 ppb	54.6 %
11B (KED)	214.125 ppb	1.0 %
24Mg (KED)	473.593 ppb	5.4 %
27Al (KED)	512.893 ppb	1.5 %
45Sc (KED)	118.178 %	2.2 %
51V (KED)	0.967 ppb	1.5 %
52Cr (KED)	2.181 ppb	4.9 %
55Mn (KED)	12.469 ppb	2.2 %
56Fe (KED)	538.535 ppb	1.7 %
58Ni (KED)	1.241 ppb	8.4 %
59Co (KED)	0.232 ppb	4.2 %
63Cu (KED)	-23.081 ppb	0.6 %
64Zn (KED)	234.362 ppb	2.0 %
69Ga (KED)	0.634 ppb	5.8 %
75As (KED)	0.328 ppb	2.8 %
80Se (KED)	0.535 ppb	33.4 %
85Rb (KED)	1.629 ppb	4.0 %
88Sr (KED)	7.391 ppb	0.3 %
89Y (KED)	99.486 %	1.0 %
107Ag (KED)	0.182 ppb	4.4 %
114Cd (KED)	-0.002 ppb	264.3 %
115In (KED)	90.509 %	0.4 %
133Cs (KED)	0.098 ppb	3.5 %
138Ba (KED)	2.210 ppb	4.3 %
139La (KED)	0.407 ppb	0.5 %
140Ce (KED)	0.833 ppb	0.8 %
141Pr (KED)	0.094 ppb	0.6 %
142Nd (KED)	0.498 ppb	2.7 %
152Sm (KED)	0.069 ppb	2.6 %
153Eu (KED)	0.013 ppb	7.1 %
158Gd (KED)	0.062 ppb	1.6 %
159Tb (KED)	90.363 %	1.6 %
164Dy (KED)	0.046 ppb	0.7 %
166Er (KED)	0.022 ppb	3.0 %
169Tm (KED)	0.004 ppb	16.3 %
174Yb (KED)	0.018 ppb	1.8 %
175Lu (KED)	-0.074 ppb	5.5 %
205Tl (KED)	0.014 ppb	52.9 %
208Pb (KED)	-3.134 ppb	1.5 %
209Bi (KED)	75.553 %	0.4 %
232Th (KED)	0.158 ppb	17.8 %
238U (KED)	0.051 ppb	46.5 %

Category	Concentration average	Intensity average	Intensity RSD
6Li (KED)	135.071 %	3,407 cps	4.4 %
9Be (KED)	0.055 ppb	9 cps	57.3 %
11B (KED)	214.125 ppb	1,201 cps	7.6 %
24Mg (KED)	473.593 ppb	257,764 cps	1.3 %
27Al (KED)	512.893 ppb	62,632 cps	1.5 %

Category	Concentration average	Intensity average	Intensity RSD
45Sc (KED)	118.178 %	46,528 cps	2.2 %
51V (KED)	0.967 ppb	8,127 cps	1.8 %
52Cr (KED)	2.181 ppb	32,039 cps	2.2 %
55Mn (KED)	12.469 ppb	84,268 cps	0.3 %
56Fe (KED)	538.535 ppb	6,017,073 cps	0.7 %
58Ni (KED)	1.241 ppb	39,512 cps	1.8 %
59Co (KED)	0.232 ppb	6,135 cps	1.8 %
63Cu (KED)	-23.081 ppb	81,379 cps	2.6 %
64Zn (KED)	234.362 ppb	759,798 cps	1.5 %
69Ga (KED)	0.634 ppb	6,341 cps	2.1 %
75As (KED)	0.328 ppb	519 cps	1.3 %
80Se (KED)	0.535 ppb	1,248 cps	6.0 %
85Rb (KED)	1.629 ppb	9,817 cps	3.1 %
88Sr (KED)	7.391 ppb	57,074 cps	1.0 %
89Y (KED)	99.486 %	385,505 cps	1.0 %
107Ag (KED)	0.182 ppb	8,307 cps	4.2 %
114Cd (KED)	-0.002 ppb	1,576 cps	5.7 %
115In (KED)	90.509 %	705,768 cps	0.4 %
133Cs (KED)	0.098 ppb	2,946 cps	3.4 %
138Ba (KED)	2.210 ppb	155,856 cps	3.2 %
139La (KED)	0.407 ppb	31,623 cps	1.8 %
140Ce (KED)	0.833 ppb	87,003 cps	2.4 %
141Pr (KED)	0.094 ppb	10,521 cps	2.2 %
142Nd (KED)	0.498 ppb	22,519 cps	1.8 %
152Sm (KED)	0.069 ppb	2,968 cps	1.2 %
153Eu (KED)	0.013 ppb	1,147 cps	8.1 %
158Gd (KED)	0.062 ppb	3,676 cps	3.1 %
159Tb (KED)	90.363 %	3,912,760 cps	1.6 %
164Dy (KED)	0.046 ppb	3,061 cps	2.2 %
166Er (KED)	0.022 ppb	2,300 cps	3.7 %
169Tm (KED)	0.004 ppb	987 cps	16.7 %
174Yb (KED)	0.018 ppb	1,862 cps	2.6 %
175Lu (KED)	-0.074 ppb	26,035 cps	3.0 %
205Tl (KED)	0.014 ppb	2,346 cps	50.2 %
208Pb (KED)	-3.134 ppb	139,967 cps	3.5 %
209Bi (KED)	75.553 %	3,173,104 cps	0.4 %
232Th (KED)	0.158 ppb	35,660 cps	17.4 %
238U (KED)	0.051 ppb	14,977 cps	40.4 %

Sample Summary

Instrument ID: iCAP Q

Analysis index: 8

Analysis name: 340jian

Analysis started at: 9/3/2021 4:13:14 PM

User name: WINDOWS-UPCI4ER\Administrator

Category	Concentration average	Concentration RSD
6Li (KED)	142.429 %	0.6 %
9Be (KED)	0.020 ppb	0.6 %
11B (KED)	230.709 ppb	0.2 %
24Mg (KED)	254.161 ppb	1.4 %
27Al (KED)	309.176 ppb	0.5 %
45Sc (KED)	122.937 %	1.0 %
51V (KED)	0.494 ppb	2.6 %
52Cr (KED)	2.008 ppb	2.0 %
55Mn (KED)	6.051 ppb	1.8 %
56Fe (KED)	294.641 ppb	1.8 %
58Ni (KED)	0.625 ppb	5.6 %
59Co (KED)	0.111 ppb	10.3 %
63Cu (KED)	-20.404 ppb	1.0 %
64Zn (KED)	252.612 ppb	4.4 %
69Ga (KED)	0.279 ppb	18.2 %
75As (KED)	0.172 ppb	9.3 %
80Se (KED)	0.700 ppb	15.8 %
85Rb (KED)	1.086 ppb	7.0 %
88Sr (KED)	3.654 ppb	3.6 %
89Y (KED)	103.474 %	3.0 %
107Ag (KED)	0.078 ppb	2.1 %
114Cd (KED)	0.009 ppb	8.7 %
115In (KED)	92.406 %	1.6 %
133Cs (KED)	0.049 ppb	9.0 %
138Ba (KED)	0.822 ppb	5.8 %
139La (KED)	0.236 ppb	2.0 %
140Ce (KED)	0.493 ppb	0.5 %
141Pr (KED)	0.053 ppb	3.8 %
142Nd (KED)	0.298 ppb	3.2 %
152Sm (KED)	0.039 ppb	5.1 %
153Eu (KED)	0.009 ppb	3.9 %
158Gd (KED)	0.035 ppb	1.3 %
159Tb (KED)	93.120 %	1.3 %
164Dy (KED)	0.026 ppb	6.6 %
166Er (KED)	0.011 ppb	6.3 %
169Tm (KED)	0.002 ppb	25.5 %
174Yb (KED)	0.009 ppb	5.0 %
175Lu (KED)	-0.079 ppb	1.7 %
205Tl (KED)	0.006 ppb	6.3 %
208Pb (KED)	-3.641 ppb	0.3 %
209Bi (KED)	78.640 %	2.0 %
232Th (KED)	0.079 ppb	2.1 %
238U (KED)	0.019 ppb	4.8 %

Category	Concentration average	Intensity average	Intensity RSD
6Li (KED)	142.429 %	3,593 cps	0.6 %
9Be (KED)	0.020 ppb	3 cps	0.0 %
11B (KED)	230.709 ppb	386 cps	7.4 %
24Mg (KED)	254.161 ppb	149,125 cps	0.9 %
27Al (KED)	309.176 ppb	40,218 cps	1.3 %

Category	Concentration average	Intensity average	Intensity RSD
45Sc (KED)	122.937 %	48,401 cps	1.0 %
51V (KED)	0.494 ppb	4,383 cps	3.1 %
52Cr (KED)	2.008 ppb	31,051 cps	1.8 %
55Mn (KED)	6.051 ppb	44,045 cps	1.5 %
56Fe (KED)	294.641 ppb	3,465,581 cps	0.8 %
58Ni (KED)	0.625 ppb	31,641 cps	0.8 %
59Co (KED)	0.111 ppb	3,277 cps	8.2 %
63Cu (KED)	-20.404 ppb	116,428 cps	0.9 %
64Zn (KED)	252.612 ppb	841,439 cps	1.1 %
69Ga (KED)	0.279 ppb	4,605 cps	3.5 %
75As (KED)	0.172 ppb	343 cps	2.9 %
80Se (KED)	0.700 ppb	1,361 cps	6.1 %
85Rb (KED)	1.086 ppb	7,234 cps	3.1 %
88Sr (KED)	3.654 ppb	30,533 cps	2.1 %
89Y (KED)	103.474 %	400,957 cps	3.0 %
107Ag (KED)	0.078 ppb	3,743 cps	3.5 %
114Cd (KED)	0.009 ppb	1,798 cps	2.2 %
115In (KED)	92.406 %	720,557 cps	1.6 %
133Cs (KED)	0.049 ppb	1,687 cps	5.9 %
138Ba (KED)	0.822 ppb	107,708 cps	2.0 %
139La (KED)	0.236 ppb	19,323 cps	2.6 %
140Ce (KED)	0.493 ppb	54,265 cps	1.5 %
141Pr (KED)	0.053 ppb	6,258 cps	3.9 %
142Nd (KED)	0.298 ppb	14,252 cps	3.2 %
152Sm (KED)	0.039 ppb	1,781 cps	3.6 %
153Eu (KED)	0.009 ppb	817 cps	4.5 %
158Gd (KED)	0.035 ppb	2,178 cps	2.0 %
159Tb (KED)	93.120 %	4,032,148 cps	1.3 %
164Dy (KED)	0.026 ppb	1,853 cps	7.3 %
166Er (KED)	0.011 ppb	1,482 cps	4.9 %
169Tm (KED)	0.002 ppb	597 cps	23.8 %
174Yb (KED)	0.009 ppb	1,041 cps	5.6 %
175Lu (KED)	-0.079 ppb	26,045 cps	0.9 %
205Tl (KED)	0.006 ppb	1,196 cps	6.8 %
208Pb (KED)	-3.641 ppb	89,041 cps	0.9 %
209Bi (KED)	78.640 %	3,302,720 cps	2.0 %
232Th (KED)	0.079 ppb	19,020 cps	1.8 %
238U (KED)	0.019 ppb	7,112 cps	3.1 %

Sample Summary

Instrument ID: iCAP Q

Analysis index: 9

Analysis name: 336jian

Analysis started at: 9/3/2021 4:16:41 PM

User name: WINDOWS-UPCI4ER\Administrator

Category	Concentration average	Concentration RSD
6Li (KED)	141.548 %	3.5 %
9Be (KED)	0.013 ppb	86.6 %
11B (KED)	222.673 ppb	0.2 %
24Mg (KED)	272.258 ppb	5.1 %
27Al (KED)	254.642 ppb	2.5 %
45Sc (KED)	126.468 %	1.9 %
51V (KED)	0.414 ppb	3.0 %
52Cr (KED)	1.265 ppb	1.2 %
55Mn (KED)	5.765 ppb	0.2 %
56Fe (KED)	243.649 ppb	0.7 %
58Ni (KED)	0.047 ppb	73.3 %
59Co (KED)	0.095 ppb	7.5 %
63Cu (KED)	-19.944 ppb	1.6 %
64Zn (KED)	230.568 ppb	1.2 %
69Ga (KED)	0.545 ppb	1.0 %
75As (KED)	0.132 ppb	26.9 %
80Se (KED)	0.630 ppb	25.3 %
85Rb (KED)	1.275 ppb	0.6 %
88Sr (KED)	4.129 ppb	1.4 %
89Y (KED)	102.682 %	0.5 %
107Ag (KED)	0.046 ppb	9.8 %
114Cd (KED)	0.011 ppb	32.3 %
115In (KED)	91.571 %	0.6 %
133Cs (KED)	0.049 ppb	12.2 %
138Ba (KED)	1.794 ppb	7.8 %
139La (KED)	0.194 ppb	3.7 %
140Ce (KED)	0.408 ppb	2.9 %
141Pr (KED)	0.044 ppb	5.0 %
142Nd (KED)	0.236 ppb	3.4 %
152Sm (KED)	0.033 ppb	5.6 %
153Eu (KED)	0.006 ppb	12.1 %
158Gd (KED)	0.029 ppb	8.6 %
159Tb (KED)	91.546 %	2.5 %
164Dy (KED)	0.021 ppb	8.8 %
166Er (KED)	0.010 ppb	9.1 %
169Tm (KED)	0.002 ppb	4.2 %
174Yb (KED)	0.008 ppb	2.3 %
175Lu (KED)	-0.082 ppb	5.9 %
205Tl (KED)	0.008 ppb	5.5 %
208Pb (KED)	-3.438 ppb	0.7 %
209Bi (KED)	73.376 %	1.5 %
232Th (KED)	0.071 ppb	1.3 %
238U (KED)	0.018 ppb	3.2 %

Category	Concentration average	Intensity average	Intensity RSD
6Li (KED)	141.548 %	3,571 cps	3.5 %
9Be (KED)	0.013 ppb	2 cps	86.6 %
11B (KED)	222.673 ppb	809 cps	6.4 %
24Mg (KED)	272.258 ppb	158,121 cps	1.4 %
27Al (KED)	254.642 ppb	34,492 cps	0.6 %

Category	Concentration average	Intensity average	Intensity RSD
45Sc (KED)	126.468 %	49,791 cps	1.9 %
51V (KED)	0.414 ppb	3,797 cps	1.6 %
52Cr (KED)	1.265 ppb	21,796 cps	1.2 %
55Mn (KED)	5.765 ppb	43,315 cps	2.0 %
56Fe (KED)	243.649 ppb	2,964,148 cps	1.3 %
58Ni (KED)	0.047 ppb	23,380 cps	0.6 %
59Co (KED)	0.095 ppb	2,946 cps	4.9 %
63Cu (KED)	-19.944 ppb	121,023 cps	3.5 %
64Zn (KED)	230.568 ppb	773,592 cps	1.4 %
69Ga (KED)	0.545 ppb	6,054 cps	0.7 %
75As (KED)	0.132 ppb	291 cps	14.8 %
80Se (KED)	0.630 ppb	1,323 cps	4.6 %
85Rb (KED)	1.275 ppb	8,215 cps	0.1 %
88Sr (KED)	4.129 ppb	33,950 cps	1.1 %
89Y (KED)	102.682 %	397,888 cps	0.5 %
107Ag (KED)	0.046 ppb	2,238 cps	9.2 %
114Cd (KED)	0.011 ppb	1,808 cps	3.8 %
115In (KED)	91.571 %	714,047 cps	0.6 %
133Cs (KED)	0.049 ppb	1,667 cps	9.2 %
138Ba (KED)	1.794 ppb	142,233 cps	2.1 %
139La (KED)	0.194 ppb	15,800 cps	1.5 %
140Ce (KED)	0.408 ppb	44,623 cps	0.4 %
141Pr (KED)	0.044 ppb	5,243 cps	3.4 %
142Nd (KED)	0.236 ppb	11,290 cps	2.2 %
152Sm (KED)	0.033 ppb	1,503 cps	6.7 %
153Eu (KED)	0.006 ppb	607 cps	8.3 %
158Gd (KED)	0.029 ppb	1,826 cps	5.8 %
159Tb (KED)	91.546 %	3,963,978 cps	2.5 %
164Dy (KED)	0.021 ppb	1,502 cps	5.7 %
166Er (KED)	0.010 ppb	1,312 cps	5.2 %
169Tm (KED)	0.002 ppb	477 cps	3.6 %
174Yb (KED)	0.008 ppb	930 cps	1.9 %
175Lu (KED)	-0.082 ppb	25,181 cps	0.6 %
205Tl (KED)	0.008 ppb	1,310 cps	5.0 %
208Pb (KED)	-3.438 ppb	104,327 cps	3.2 %
209Bi (KED)	73.376 %	3,081,667 cps	1.5 %
232Th (KED)	0.071 ppb	15,906 cps	2.3 %
238U (KED)	0.018 ppb	6,528 cps	1.4 %

Sample Summary

Instrument ID: iCAP Q

Analysis index: 10

Analysis name: 332jian

Analysis started at: 9/3/2021 4:20:15 PM

User name: WINDOWS-UPCI4ER\Administrator

Category	Concentration average	Concentration RSD
6Li (KED)	141.239 %	1.1 %
9Be (KED)	0.020 ppb	100.2 %
11B (KED)	231.450 ppb	0.3 %
24Mg (KED)	323.264 ppb	1.8 %
27Al (KED)	426.006 ppb	0.9 %
45Sc (KED)	124.920 %	1.6 %
51V (KED)	0.680 ppb	1.5 %
52Cr (KED)	1.888 ppb	2.2 %
55Mn (KED)	8.251 ppb	3.3 %
56Fe (KED)	411.079 ppb	1.0 %
58Ni (KED)	0.610 ppb	8.6 %
59Co (KED)	0.213 ppb	8.1 %
63Cu (KED)	-22.297 ppb	0.5 %
64Zn (KED)	258.660 ppb	0.5 %
69Ga (KED)	0.527 ppb	5.6 %
75As (KED)	0.246 ppb	12.8 %
80Se (KED)	0.664 ppb	8.6 %
85Rb (KED)	1.320 ppb	4.5 %
88Sr (KED)	4.498 ppb	3.0 %
89Y (KED)	102.546 %	1.1 %
107Ag (KED)	0.069 ppb	4.8 %
114Cd (KED)	0.021 ppb	11.0 %
115In (KED)	89.268 %	0.4 %
133Cs (KED)	0.074 ppb	2.3 %
138Ba (KED)	1.568 ppb	13.6 %
139La (KED)	0.371 ppb	2.5 %
140Ce (KED)	0.759 ppb	1.6 %
141Pr (KED)	0.079 ppb	5.7 %
142Nd (KED)	0.445 ppb	0.9 %
152Sm (KED)	0.054 ppb	4.7 %
153Eu (KED)	0.011 ppb	3.2 %
158Gd (KED)	0.047 ppb	1.6 %
159Tb (KED)	89.232 %	1.9 %
164Dy (KED)	0.032 ppb	4.6 %
166Er (KED)	0.015 ppb	8.7 %
169Tm (KED)	0.002 ppb	7.0 %
174Yb (KED)	0.013 ppb	4.8 %
175Lu (KED)	-0.090 ppb	11.1 %
205Tl (KED)	0.007 ppb	7.3 %
208Pb (KED)	-3.533 ppb	0.4 %
209Bi (KED)	74.208 %	1.2 %
232Th (KED)	0.104 ppb	1.3 %
238U (KED)	0.030 ppb	2.3 %

Category	Concentration average	Intensity average	Intensity RSD
6Li (KED)	141.239 %	3,563 cps	1.1 %
9Be (KED)	0.020 ppb	3 cps	100.0 %
11B (KED)	231.450 ppb	343 cps	9.9 %
24Mg (KED)	323.264 ppb	186,310 cps	1.2 %
27Al (KED)	426.006 ppb	55,403 cps	1.6 %

Category	Concentration average	Intensity average	Intensity RSD
45Sc (KED)	124.920 %	49,182 cps	1.6 %
51V (KED)	0.680 ppb	6,077 cps	2.7 %
52Cr (KED)	1.888 ppb	29,930 cps	0.3 %
55Mn (KED)	8.251 ppb	59,938 cps	1.5 %
56Fe (KED)	411.079 ppb	4,877,235 cps	0.6 %
58Ni (KED)	0.610 ppb	31,915 cps	1.6 %
59Co (KED)	0.213 ppb	5,993 cps	8.7 %
63Cu (KED)	-22.297 ppb	93,109 cps	0.5 %
64Zn (KED)	258.660 ppb	851,526 cps	1.5 %
69Ga (KED)	0.527 ppb	5,941 cps	3.3 %
75As (KED)	0.246 ppb	432 cps	8.2 %
80Se (KED)	0.664 ppb	1,335 cps	1.7 %
85Rb (KED)	1.320 ppb	8,443 cps	2.8 %
88Sr (KED)	4.498 ppb	36,718 cps	1.8 %
89Y (KED)	102.546 %	397,359 cps	1.1 %
107Ag (KED)	0.069 ppb	3,208 cps	4.3 %
114Cd (KED)	0.021 ppb	1,929 cps	1.9 %
115In (KED)	89.268 %	696,086 cps	0.4 %
133Cs (KED)	0.074 ppb	2,297 cps	2.1 %
138Ba (KED)	1.568 ppb	130,380 cps	4.3 %
139La (KED)	0.371 ppb	28,527 cps	0.5 %
140Ce (KED)	0.759 ppb	78,499 cps	0.7 %
141Pr (KED)	0.079 ppb	8,834 cps	3.5 %
142Nd (KED)	0.445 ppb	19,994 cps	2.1 %
152Sm (KED)	0.054 ppb	2,311 cps	4.4 %
153Eu (KED)	0.011 ppb	937 cps	2.2 %
158Gd (KED)	0.047 ppb	2,748 cps	0.9 %
159Tb (KED)	89.232 %	3,863,774 cps	1.9 %
164Dy (KED)	0.032 ppb	2,142 cps	4.2 %
166Er (KED)	0.015 ppb	1,681 cps	6.8 %
169Tm (KED)	0.002 ppb	654 cps	4.5 %
174Yb (KED)	0.013 ppb	1,295 cps	6.2 %
175Lu (KED)	-0.090 ppb	23,202 cps	6.5 %
205Tl (KED)	0.007 ppb	1,231 cps	7.6 %
208Pb (KED)	-3.533 ppb	95,462 cps	0.3 %
209Bi (KED)	74.208 %	3,116,620 cps	1.2 %
232Th (KED)	0.104 ppb	23,400 cps	2.3 %
238U (KED)	0.030 ppb	9,420 cps	1.8 %

Sample Summary

Instrument ID: iCAP Q

Analysis index: 11

Analysis name: 330jian

Analysis started at: 9/3/2021 4:23:34 PM

User name: WINDOWS-UPCI4ER\Administrator

Category	Concentration average	Concentration RSD
6Li (KED)	142.693 %	5.9 %
9Be (KED)	0.007 ppb	173.2 %
11B (KED)	227.447 ppb	0.5 %
24Mg (KED)	313.591 ppb	5.9 %
27Al (KED)	389.227 ppb	1.1 %
45Sc (KED)	123.359 %	1.7 %
51V (KED)	0.616 ppb	1.2 %
52Cr (KED)	1.505 ppb	2.1 %
55Mn (KED)	8.574 ppb	1.2 %
56Fe (KED)	369.731 ppb	0.7 %
58Ni (KED)	0.437 ppb	13.1 %
59Co (KED)	0.260 ppb	3.7 %
63Cu (KED)	-18.788 ppb	1.4 %
64Zn (KED)	259.724 ppb	3.1 %
69Ga (KED)	0.415 ppb	4.2 %
75As (KED)	0.176 ppb	8.1 %
80Se (KED)	0.348 ppb	35.7 %
85Rb (KED)	1.097 ppb	2.2 %
88Sr (KED)	5.191 ppb	5.1 %
89Y (KED)	99.729 %	2.7 %
107Ag (KED)	0.037 ppb	3.8 %
114Cd (KED)	-0.027 ppb	15.8 %
115In (KED)	89.799 %	0.9 %
133Cs (KED)	0.070 ppb	5.0 %
138Ba (KED)	1.175 ppb	1.4 %
139La (KED)	0.315 ppb	3.6 %
140Ce (KED)	0.680 ppb	3.4 %
141Pr (KED)	0.071 ppb	2.4 %
142Nd (KED)	0.406 ppb	1.1 %
152Sm (KED)	0.053 ppb	3.7 %
153Eu (KED)	0.010 ppb	4.6 %
158Gd (KED)	0.050 ppb	5.2 %
159Tb (KED)	90.291 %	1.2 %
164Dy (KED)	0.035 ppb	4.2 %
166Er (KED)	0.015 ppb	6.3 %
169Tm (KED)	0.002 ppb	8.7 %
174Yb (KED)	0.013 ppb	7.5 %
175Lu (KED)	-0.094 ppb	1.5 %
205Tl (KED)	0.006 ppb	2.4 %
208Pb (KED)	-3.660 ppb	0.7 %
209Bi (KED)	73.058 %	1.1 %
232Th (KED)	0.117 ppb	4.6 %
238U (KED)	0.025 ppb	8.0 %

Category	Concentration average	Intensity average	Intensity RSD
6Li (KED)	142.693 %	3,599 cps	5.9 %
9Be (KED)	0.007 ppb	1 cps	173.2 %
11B (KED)	227.447 ppb	558 cps	6.7 %
24Mg (KED)	313.591 ppb	182,412 cps	1.4 %
27Al (KED)	389.227 ppb	50,188 cps	1.0 %

Category	Concentration average	Intensity average	Intensity RSD
45Sc (KED)	123.359 %	48,568 cps	1.7 %
51V (KED)	0.616 ppb	5,449 cps	0.7 %
52Cr (KED)	1.505 ppb	24,457 cps	3.4 %
55Mn (KED)	8.574 ppb	61,423 cps	2.6 %
56Fe (KED)	369.731 ppb	4,341,018 cps	1.0 %
58Ni (KED)	0.437 ppb	28,840 cps	2.0 %
59Co (KED)	0.260 ppb	7,143 cps	4.3 %
63Cu (KED)	-18.788 ppb	130,730 cps	0.6 %
64Zn (KED)	259.724 ppb	830,622 cps	0.1 %
69Ga (KED)	0.415 ppb	5,177 cps	1.3 %
75As (KED)	0.176 ppb	337 cps	6.2 %
80Se (KED)	0.348 ppb	1,181 cps	2.4 %
85Rb (KED)	1.097 ppb	7,041 cps	2.6 %
88Sr (KED)	5.191 ppb	40,829 cps	2.0 %
89Y (KED)	99.729 %	386,444 cps	2.7 %
107Ag (KED)	0.037 ppb	1,788 cps	4.1 %
114Cd (KED)	-0.027 ppb	1,141 cps	5.4 %
115In (KED)	89.799 %	700,228 cps	0.9 %
133Cs (KED)	0.070 ppb	2,191 cps	3.5 %
138Ba (KED)	1.175 ppb	117,497 cps	0.7 %
139La (KED)	0.315 ppb	24,721 cps	2.4 %
140Ce (KED)	0.680 ppb	71,385 cps	2.1 %
141Pr (KED)	0.071 ppb	8,056 cps	1.9 %
142Nd (KED)	0.406 ppb	18,510 cps	0.5 %
152Sm (KED)	0.053 ppb	2,295 cps	4.2 %
153Eu (KED)	0.010 ppb	864 cps	4.2 %
158Gd (KED)	0.050 ppb	2,961 cps	4.2 %
159Tb (KED)	90.291 %	3,909,661 cps	1.2 %
164Dy (KED)	0.035 ppb	2,365 cps	4.5 %
166Er (KED)	0.015 ppb	1,705 cps	4.8 %
169Tm (KED)	0.002 ppb	620 cps	7.5 %
174Yb (KED)	0.013 ppb	1,361 cps	5.6 %
175Lu (KED)	-0.094 ppb	22,967 cps	0.2 %
205Tl (KED)	0.006 ppb	1,048 cps	1.3 %
208Pb (KED)	-3.660 ppb	80,714 cps	2.3 %
209Bi (KED)	73.058 %	3,068,293 cps	1.1 %
232Th (KED)	0.117 ppb	25,698 cps	3.4 %
238U (KED)	0.025 ppb	8,227 cps	5.6 %

Sample Summary

Instrument ID: iCAP Q

Analysis index: 12

Analysis name: 326jian

Analysis started at: 9/3/2021 4:26:51 PM

User name: WINDOWS-UPCI4ER\Administrator

Category	Concentration average	Concentration RSD
6Li (KED)	143.795 %	2.2 %
9Be (KED)	0.020 ppb	173.2 %
11B (KED)	228.233 ppb	0.1 %
24Mg (KED)	211.241 ppb	2.2 %
27Al (KED)	240.841 ppb	1.1 %
45Sc (KED)	124.980 %	2.3 %
51V (KED)	0.388 ppb	4.4 %
52Cr (KED)	2.362 ppb	2.0 %
55Mn (KED)	4.492 ppb	1.0 %
56Fe (KED)	229.969 ppb	3.9 %
58Ni (KED)	-0.142 ppb	28.8 %
59Co (KED)	0.130 ppb	3.8 %
63Cu (KED)	-24.887 ppb	0.5 %
64Zn (KED)	275.070 ppb	3.1 %
69Ga (KED)	0.095 ppb	3.1 %
75As (KED)	0.169 ppb	19.9 %
80Se (KED)	0.969 ppb	30.8 %
85Rb (KED)	0.815 ppb	5.0 %
88Sr (KED)	3.196 ppb	2.1 %
89Y (KED)	101.596 %	1.3 %
107Ag (KED)	0.042 ppb	11.1 %
114Cd (KED)	0.051 ppb	7.0 %
115In (KED)	93.442 %	1.6 %
133Cs (KED)	0.036 ppb	13.5 %
138Ba (KED)	0.135 ppb	41.4 %
139La (KED)	0.191 ppb	2.2 %
140Ce (KED)	0.398 ppb	3.0 %
141Pr (KED)	0.043 ppb	6.8 %
142Nd (KED)	0.240 ppb	1.5 %
152Sm (KED)	0.029 ppb	9.1 %
153Eu (KED)	0.005 ppb	5.6 %
158Gd (KED)	0.026 ppb	3.8 %
159Tb (KED)	91.646 %	1.3 %
164Dy (KED)	0.018 ppb	5.1 %
166Er (KED)	0.007 ppb	14.4 %
169Tm (KED)	0.001 ppb	4.2 %
174Yb (KED)	0.007 ppb	9.9 %
175Lu (KED)	-0.096 ppb	1.0 %
205Tl (KED)	0.005 ppb	7.4 %
208Pb (KED)	-3.710 ppb	0.5 %
209Bi (KED)	78.051 %	1.0 %
232Th (KED)	0.064 ppb	3.8 %
238U (KED)	0.015 ppb	3.5 %

Category	Concentration average	Intensity average	Intensity RSD
6Li (KED)	143.795 %	3,627 cps	2.2 %
9Be (KED)	0.020 ppb	3 cps	173.2 %
11B (KED)	228.233 ppb	522 cps	2.2 %
24Mg (KED)	211.241 ppb	126,219 cps	0.6 %
27Al (KED)	240.841 ppb	32,374 cps	1.5 %

Category	Concentration average	Intensity average	Intensity RSD
45Sc (KED)	124.980 %	49,206 cps	2.3 %
51V (KED)	0.388 ppb	3,524 cps	3.0 %
52Cr (KED)	2.362 ppb	36,348 cps	1.7 %
55Mn (KED)	4.492 ppb	34,000 cps	1.4 %
56Fe (KED)	229.969 ppb	2,768,606 cps	1.7 %
58Ni (KED)	-0.142 ppb	20,154 cps	1.0 %
59Co (KED)	0.130 ppb	3,833 cps	4.5 %
63Cu (KED)	-24.887 ppb	61,997 cps	1.0 %
64Zn (KED)	275.070 ppb	889,116 cps	1.5 %
69Ga (KED)	0.095 ppb	3,522 cps	1.7 %
75As (KED)	0.169 ppb	333 cps	12.1 %
80Se (KED)	0.969 ppb	1,436 cps	6.7 %
85Rb (KED)	0.815 ppb	5,659 cps	4.1 %
88Sr (KED)	3.196 ppb	26,528 cps	1.8 %
89Y (KED)	101.596 %	393,678 cps	1.3 %
107Ag (KED)	0.042 ppb	2,118 cps	9.2 %
114Cd (KED)	0.051 ppb	2,558 cps	0.9 %
115In (KED)	93.442 %	728,636 cps	1.6 %
133Cs (KED)	0.036 ppb	1,355 cps	11.0 %
138Ba (KED)	0.135 ppb	80,254 cps	1.4 %
139La (KED)	0.191 ppb	15,579 cps	1.0 %
140Ce (KED)	0.398 ppb	43,623 cps	1.6 %
141Pr (KED)	0.043 ppb	5,177 cps	5.0 %
142Nd (KED)	0.240 ppb	11,469 cps	2.1 %
152Sm (KED)	0.029 ppb	1,356 cps	8.5 %
153Eu (KED)	0.005 ppb	510 cps	3.5 %
158Gd (KED)	0.026 ppb	1,660 cps	4.0 %
159Tb (KED)	91.646 %	3,968,299 cps	1.3 %
164Dy (KED)	0.018 ppb	1,269 cps	4.0 %
166Er (KED)	0.007 ppb	1,086 cps	6.8 %
169Tm (KED)	0.001 ppb	361 cps	2.3 %
174Yb (KED)	0.007 ppb	754 cps	7.1 %
175Lu (KED)	-0.096 ppb	23,007 cps	0.8 %
205Tl (KED)	0.005 ppb	914 cps	5.7 %
208Pb (KED)	-3.710 ppb	80,689 cps	2.5 %
209Bi (KED)	78.051 %	3,277,982 cps	1.0 %
232Th (KED)	0.064 ppb	15,312 cps	2.6 %
238U (KED)	0.015 ppb	6,017 cps	2.2 %

Sample Summary

Instrument ID: iCAP Q

Analysis index: 13

Analysis name: 00026jian

Analysis started at: 9/3/2021 4:30:18 PM

User name: WINDOWS-UPCI4ER\Administrator

Category	Concentration average	Concentration RSD
6Li (KED)	142.341 %	2.1 %
9Be (KED)	0.020 ppb	99.9 %
11B (KED)	229.031 ppb	0.6 %
24Mg (KED)	372.199 ppb	2.9 %
27Al (KED)	391.985 ppb	1.9 %
45Sc (KED)	127.663 %	0.8 %
51V (KED)	0.647 ppb	3.3 %
52Cr (KED)	6.862 ppb	1.4 %
55Mn (KED)	8.824 ppb	1.5 %
56Fe (KED)	452.940 ppb	1.3 %
58Ni (KED)	1.160 ppb	3.6 %
59Co (KED)	0.212 ppb	2.5 %
63Cu (KED)	-13.635 ppb	1.6 %
64Zn (KED)	236.267 ppb	0.4 %
69Ga (KED)	1.368 ppb	0.9 %
75As (KED)	0.491 ppb	4.3 %
80Se (KED)	0.461 ppb	12.5 %
85Rb (KED)	2.125 ppb	3.6 %
88Sr (KED)	4.490 ppb	0.9 %
89Y (KED)	102.357 %	1.3 %
107Ag (KED)	0.082 ppb	2.6 %
114Cd (KED)	0.077 ppb	7.0 %
115In (KED)	90.146 %	1.3 %
133Cs (KED)	0.068 ppb	2.5 %
138Ba (KED)	4.374 ppb	1.0 %
139La (KED)	0.299 ppb	2.2 %
140Ce (KED)	0.625 ppb	0.6 %
141Pr (KED)	0.075 ppb	1.7 %
142Nd (KED)	0.380 ppb	1.1 %
152Sm (KED)	0.053 ppb	7.5 %
153Eu (KED)	0.012 ppb	8.0 %
158Gd (KED)	0.045 ppb	4.5 %
159Tb (KED)	91.452 %	0.5 %
164Dy (KED)	0.031 ppb	8.8 %
166Er (KED)	0.015 ppb	4.7 %
169Tm (KED)	0.002 ppb	9.9 %
174Yb (KED)	0.012 ppb	5.7 %
175Lu (KED)	-0.101 ppb	1.9 %
205Tl (KED)	0.011 ppb	9.1 %
208Pb (KED)	-3.128 ppb	2.0 %
209Bi (KED)	73.032 %	2.1 %
232Th (KED)	0.111 ppb	0.6 %
238U (KED)	0.037 ppb	3.0 %

Category	Concentration average	Intensity average	Intensity RSD
6Li (KED)	142.341 %	3,591 cps	2.1 %
9Be (KED)	0.020 ppb	3 cps	100.0 %
11B (KED)	229.031 ppb	474 cps	14.8 %
24Mg (KED)	372.199 ppb	215,128 cps	1.0 %
27Al (KED)	391.985 ppb	52,297 cps	2.4 %

Category	Concentration average	Intensity average	Intensity RSD
45Sc (KED)	127.663 %	50,262 cps	0.8 %
51V (KED)	0.647 ppb	5,916 cps	3.7 %
52Cr (KED)	6.862 ppb	99,234 cps	1.3 %
55Mn (KED)	8.824 ppb	65,324 cps	2.0 %
56Fe (KED)	452.940 ppb	5,482,619 cps	0.5 %
58Ni (KED)	1.160 ppb	41,407 cps	1.1 %
59Co (KED)	0.212 ppb	6,107 cps	2.8 %
63Cu (KED)	-13.635 ppb	194,837 cps	0.7 %
64Zn (KED)	236.267 ppb	787,087 cps	1.0 %
69Ga (KED)	1.368 ppb	10,580 cps	1.1 %
75As (KED)	0.491 ppb	736 cps	2.9 %
80Se (KED)	0.461 ppb	1,256 cps	2.9 %
85Rb (KED)	2.125 ppb	12,791 cps	4.1 %
88Sr (KED)	4.490 ppb	36,597 cps	1.2 %
89Y (KED)	102.357 %	396,629 cps	1.3 %
107Ag (KED)	0.082 ppb	3,791 cps	2.4 %
114Cd (KED)	0.077 ppb	2,895 cps	3.3 %
115In (KED)	90.146 %	702,938 cps	1.3 %
133Cs (KED)	0.068 ppb	2,136 cps	2.5 %
138Ba (KED)	4.374 ppb	238,664 cps	0.5 %
139La (KED)	0.299 ppb	23,768 cps	2.1 %
140Ce (KED)	0.625 ppb	66,754 cps	0.8 %
141Pr (KED)	0.075 ppb	8,550 cps	1.7 %
142Nd (KED)	0.380 ppb	17,614 cps	0.9 %
152Sm (KED)	0.053 ppb	2,324 cps	7.1 %
153Eu (KED)	0.012 ppb	1,023 cps	7.8 %
158Gd (KED)	0.045 ppb	2,747 cps	4.2 %
159Tb (KED)	91.452 %	3,959,917 cps	0.5 %
164Dy (KED)	0.031 ppb	2,164 cps	7.9 %
166Er (KED)	0.015 ppb	1,742 cps	3.2 %
169Tm (KED)	0.002 ppb	582 cps	8.6 %
174Yb (KED)	0.012 ppb	1,309 cps	4.7 %
175Lu (KED)	-0.101 ppb	22,143 cps	1.8 %
205Tl (KED)	0.011 ppb	1,852 cps	7.1 %
208Pb (KED)	-3.128 ppb	135,856 cps	3.2 %
209Bi (KED)	73.032 %	3,067,233 cps	2.1 %
232Th (KED)	0.111 ppb	24,526 cps	1.9 %
238U (KED)	0.037 ppb	11,166 cps	2.0 %

Sample Summary

Instrument ID: iCAP Q

Analysis index: 14

Analysis name: 178607jian

Analysis started at: 9/3/2021 4:33:38 PM

User name: WINDOWS-UPCI4ER\Administrator

Category	Concentration average	Concentration RSD
6Li (KED)	146.042 %	2.2 %
9Be (KED)	0.026 ppb	173.2 %
11B (KED)	229.016 ppb	0.2 %
24Mg (KED)	451.760 ppb	0.9 %
27Al (KED)	351.272 ppb	1.6 %
45Sc (KED)	132.263 %	1.0 %
51V (KED)	0.586 ppb	0.9 %
52Cr (KED)	2.414 ppb	13.5 %
55Mn (KED)	8.333 ppb	1.1 %
56Fe (KED)	331.274 ppb	1.7 %
58Ni (KED)	1.263 ppb	6.0 %
59Co (KED)	0.200 ppb	2.4 %
63Cu (KED)	-5.029 ppb	11.0 %
64Zn (KED)	259.907 ppb	3.1 %
69Ga (KED)	1.242 ppb	1.2 %
75As (KED)	0.218 ppb	16.3 %
80Se (KED)	0.783 ppb	28.9 %
85Rb (KED)	3.847 ppb	2.3 %
88Sr (KED)	8.960 ppb	3.9 %
89Y (KED)	105.288 %	2.5 %
107Ag (KED)	0.460 ppb	4.1 %
114Cd (KED)	0.047 ppb	2.9 %
115In (KED)	90.575 %	2.2 %
133Cs (KED)	0.050 ppb	5.1 %
138Ba (KED)	4.139 ppb	6.1 %
139La (KED)	0.284 ppb	4.3 %
140Ce (KED)	0.581 ppb	2.3 %
141Pr (KED)	0.066 ppb	5.9 %
142Nd (KED)	0.356 ppb	2.6 %
152Sm (KED)	0.044 ppb	9.2 %
153Eu (KED)	0.009 ppb	13.3 %
158Gd (KED)	0.040 ppb	1.2 %
159Tb (KED)	89.063 %	1.7 %
164Dy (KED)	0.026 ppb	6.7 %
166Er (KED)	0.012 ppb	6.2 %
169Tm (KED)	0.002 ppb	13.5 %
174Yb (KED)	0.017 ppb	6.5 %
175Lu (KED)	-0.099 ppb	4.1 %
205Tl (KED)	0.007 ppb	0.4 %
208Pb (KED)	-3.323 ppb	0.2 %
209Bi (KED)	71.725 %	2.4 %
232Th (KED)	0.089 ppb	2.2 %
238U (KED)	0.025 ppb	4.9 %

Category	Concentration average	Intensity average	Intensity RSD
6Li (KED)	146.042 %	3,684 cps	2.2 %
9Be (KED)	0.026 ppb	4 cps	173.2 %
11B (KED)	229.016 ppb	488 cps	4.8 %
24Mg (KED)	451.760 ppb	266,543 cps	1.7 %
27Al (KED)	351.272 ppb	48,812 cps	1.3 %

Category	Concentration average	Intensity average	Intensity RSD
45Sc (KED)	132.263 %	52,073 cps	1.0 %
51V (KED)	0.586 ppb	5,563 cps	1.8 %
52Cr (KED)	2.414 ppb	39,196 cps	11.4 %
55Mn (KED)	8.333 ppb	64,084 cps	1.1 %
56Fe (KED)	331.274 ppb	4,180,169 cps	1.0 %
58Ni (KED)	1.263 ppb	44,619 cps	3.1 %
59Co (KED)	0.200 ppb	6,001 cps	2.4 %
63Cu (KED)	-5.029 ppb	304,476 cps	0.5 %
64Zn (KED)	259.907 ppb	877,530 cps	1.4 %
69Ga (KED)	1.242 ppb	10,169 cps	3.4 %
75As (KED)	0.218 ppb	409 cps	12.9 %
80Se (KED)	0.783 ppb	1,416 cps	4.9 %
85Rb (KED)	3.847 ppb	22,731 cps	1.4 %
88Sr (KED)	8.960 ppb	72,666 cps	1.2 %
89Y (KED)	105.288 %	407,986 cps	2.5 %
107Ag (KED)	0.460 ppb	20,765 cps	2.0 %
114Cd (KED)	0.047 ppb	2,410 cps	2.2 %
115In (KED)	90.575 %	706,283 cps	2.2 %
133Cs (KED)	0.050 ppb	1,681 cps	6.0 %
138Ba (KED)	4.139 ppb	223,791 cps	2.8 %
139La (KED)	0.284 ppb	22,072 cps	2.6 %
140Ce (KED)	0.581 ppb	60,568 cps	0.7 %
141Pr (KED)	0.066 ppb	7,437 cps	6.7 %
142Nd (KED)	0.356 ppb	16,100 cps	2.4 %
152Sm (KED)	0.044 ppb	1,907 cps	9.2 %
153Eu (KED)	0.009 ppb	822 cps	10.3 %
158Gd (KED)	0.040 ppb	2,365 cps	0.5 %
159Tb (KED)	89.063 %	3,856,469 cps	1.7 %
164Dy (KED)	0.026 ppb	1,746 cps	5.2 %
166Er (KED)	0.012 ppb	1,455 cps	4.9 %
169Tm (KED)	0.002 ppb	454 cps	12.1 %
174Yb (KED)	0.017 ppb	1,678 cps	6.4 %
175Lu (KED)	-0.099 ppb	21,821 cps	1.5 %
205Tl (KED)	0.007 ppb	1,252 cps	2.4 %
208Pb (KED)	-3.323 ppb	113,598 cps	2.4 %
209Bi (KED)	71.725 %	3,012,320 cps	2.4 %
232Th (KED)	0.089 ppb	19,479 cps	0.3 %
238U (KED)	0.025 ppb	7,974 cps	6.0 %

Sample Summary

Instrument ID: iCAP Q

Analysis index: 15

Analysis name: 178578jian

Analysis started at: 9/3/2021 4:37:06 PM

User name: WINDOWS-UPCI4ER\Administrator

Category	Concentration average	Concentration RSD
6Li (KED)	165.165 %	2.1 %
9Be (KED)	0.040 ppb	25.7 %
11B (KED)	231.253 ppb	0.1 %
24Mg (KED)	329.171 ppb	1.0 %
27Al (KED)	319.218 ppb	2.6 %
45Sc (KED)	148.261 %	2.4 %
51V (KED)	0.500 ppb	3.3 %
52Cr (KED)	2.322 ppb	1.3 %
55Mn (KED)	6.832 ppb	1.8 %
56Fe (KED)	327.993 ppb	2.0 %
58Ni (KED)	1.381 ppb	4.7 %
59Co (KED)	0.140 ppb	4.4 %
63Cu (KED)	-11.600 ppb	3.6 %
64Zn (KED)	216.558 ppb	4.1 %
69Ga (KED)	0.728 ppb	10.5 %
75As (KED)	0.232 ppb	6.2 %
80Se (KED)	0.721 ppb	8.5 %
85Rb (KED)	3.018 ppb	1.2 %
88Sr (KED)	5.435 ppb	2.1 %
89Y (KED)	110.666 %	2.4 %
107Ag (KED)	0.579 ppb	2.3 %
114Cd (KED)	0.094 ppb	4.3 %
115In (KED)	94.831 %	1.0 %
133Cs (KED)	0.071 ppb	1.4 %
138Ba (KED)	2.201 ppb	2.3 %
139La (KED)	0.246 ppb	2.0 %
140Ce (KED)	0.506 ppb	2.8 %
141Pr (KED)	0.059 ppb	0.9 %
142Nd (KED)	0.313 ppb	2.8 %
152Sm (KED)	0.043 ppb	4.3 %
153Eu (KED)	0.009 ppb	8.8 %
158Gd (KED)	0.040 ppb	8.3 %
159Tb (KED)	92.568 %	1.4 %
164Dy (KED)	0.026 ppb	4.3 %
166Er (KED)	0.011 ppb	10.9 %
169Tm (KED)	0.002 ppb	9.2 %
174Yb (KED)	0.010 ppb	6.5 %
175Lu (KED)	-0.096 ppb	5.6 %
205Tl (KED)	0.008 ppb	6.2 %
208Pb (KED)	-3.556 ppb	1.0 %
209Bi (KED)	72.159 %	3.6 %
232Th (KED)	0.100 ppb	3.6 %
238U (KED)	0.024 ppb	5.6 %

Category	Concentration average	Intensity average	Intensity RSD
6Li (KED)	165.165 %	4,166 cps	2.1 %
9Be (KED)	0.040 ppb	8 cps	24.7 %
11B (KED)	231.253 ppb	413 cps	0.8 %
24Mg (KED)	329.171 ppb	221,707 cps	1.5 %
27Al (KED)	319.218 ppb	49,969 cps	1.4 %

Category	Concentration average	Intensity average	Intensity RSD
45Sc (KED)	148.261 %	58,372 cps	2.4 %
51V (KED)	0.500 ppb	5,338 cps	4.0 %
52Cr (KED)	2.322 ppb	42,484 cps	1.8 %
55Mn (KED)	6.832 ppb	59,514 cps	1.0 %
56Fe (KED)	327.993 ppb	4,639,623 cps	1.1 %
58Ni (KED)	1.381 ppb	52,189 cps	1.5 %
59Co (KED)	0.140 ppb	4,849 cps	1.6 %
63Cu (KED)	-11.600 ppb	236,487 cps	1.1 %
64Zn (KED)	216.558 ppb	790,794 cps	1.1 %
69Ga (KED)	0.728 ppb	7,612 cps	5.4 %
75As (KED)	0.232 ppb	449 cps	6.0 %
80Se (KED)	0.721 ppb	1,463 cps	3.2 %
85Rb (KED)	3.018 ppb	19,046 cps	2.1 %
88Sr (KED)	5.435 ppb	47,348 cps	0.4 %
89Y (KED)	110.666 %	428,826 cps	2.4 %
107Ag (KED)	0.579 ppb	27,347 cps	2.0 %
114Cd (KED)	0.094 ppb	3,346 cps	2.5 %
115In (KED)	94.831 %	739,466 cps	1.0 %
133Cs (KED)	0.071 ppb	2,330 cps	0.7 %
138Ba (KED)	2.201 ppb	159,327 cps	2.5 %
139La (KED)	0.246 ppb	20,031 cps	0.5 %
140Ce (KED)	0.506 ppb	55,233 cps	1.2 %
141Pr (KED)	0.059 ppb	6,909 cps	0.6 %
142Nd (KED)	0.313 ppb	14,814 cps	1.2 %
152Sm (KED)	0.043 ppb	1,938 cps	2.7 %
153Eu (KED)	0.009 ppb	792 cps	7.2 %
158Gd (KED)	0.040 ppb	2,450 cps	6.5 %
159Tb (KED)	92.568 %	4,008,235 cps	1.4 %
164Dy (KED)	0.026 ppb	1,833 cps	2.6 %
166Er (KED)	0.011 ppb	1,456 cps	8.0 %
169Tm (KED)	0.002 ppb	501 cps	9.0 %
174Yb (KED)	0.010 ppb	1,110 cps	4.8 %
175Lu (KED)	-0.096 ppb	23,220 cps	2.5 %
205Tl (KED)	0.008 ppb	1,402 cps	3.8 %
208Pb (KED)	-3.556 ppb	90,415 cps	3.1 %
209Bi (KED)	72.159 %	3,030,534 cps	3.6 %
232Th (KED)	0.100 ppb	21,782 cps	0.5 %
238U (KED)	0.024 ppb	7,831 cps	2.8 %

Sample Summary

Instrument ID: iCAP Q

Analysis index: 16

Analysis name: 00029jian

Analysis started at: 9/3/2021 4:40:34 PM

User name: WINDOWS-UPCI4ER\Administrator

Category	Concentration average	Concentration RSD
6Li (KED)	157.675 %	3.1 %
9Be (KED)	0.037 ppb	133.8 %
11B (KED)	226.449 ppb	0.2 %
24Mg (KED)	441.902 ppb	2.9 %
27Al (KED)	534.840 ppb	2.0 %
45Sc (KED)	136.806 %	0.5 %
51V (KED)	0.839 ppb	2.8 %
52Cr (KED)	2.642 ppb	0.6 %
55Mn (KED)	12.314 ppb	1.1 %
56Fe (KED)	511.561 ppb	1.2 %
58Ni (KED)	1.740 ppb	3.0 %
59Co (KED)	0.256 ppb	1.4 %
63Cu (KED)	-8.005 ppb	1.5 %
64Zn (KED)	247.587 ppb	2.1 %
69Ga (KED)	1.324 ppb	2.6 %
75As (KED)	0.527 ppb	7.4 %
80Se (KED)	0.770 ppb	33.2 %
85Rb (KED)	1.929 ppb	4.5 %
88Sr (KED)	6.491 ppb	2.4 %
89Y (KED)	107.819 %	1.3 %
107Ag (KED)	0.131 ppb	2.1 %
114Cd (KED)	0.028 ppb	21.3 %
115In (KED)	90.636 %	0.4 %
133Cs (KED)	0.090 ppb	1.8 %
138Ba (KED)	4.197 ppb	3.0 %
139La (KED)	0.414 ppb	1.1 %
140Ce (KED)	0.879 ppb	0.9 %
141Pr (KED)	0.087 ppb	3.4 %
142Nd (KED)	0.509 ppb	2.9 %
152Sm (KED)	0.065 ppb	3.6 %
153Eu (KED)	0.014 ppb	7.1 %
158Gd (KED)	0.060 ppb	3.0 %
159Tb (KED)	88.987 %	1.2 %
164Dy (KED)	0.038 ppb	1.6 %
166Er (KED)	0.016 ppb	3.9 %
169Tm (KED)	0.002 ppb	6.6 %
174Yb (KED)	0.016 ppb	11.2 %
175Lu (KED)	-0.103 ppb	1.3 %
205Tl (KED)	0.015 ppb	3.8 %
208Pb (KED)	-2.918 ppb	1.3 %
209Bi (KED)	70.609 %	1.3 %
232Th (KED)	0.133 ppb	1.4 %
238U (KED)	0.043 ppb	2.3 %

Category	Concentration average	Intensity average	Intensity RSD
6Li (KED)	157.675 %	3,977 cps	3.1 %
9Be (KED)	0.037 ppb	7 cps	132.3 %
11B (KED)	226.449 ppb	678 cps	4.8 %
24Mg (KED)	441.902 ppb	281,541 cps	1.8 %
27Al (KED)	534.840 ppb	75,505 cps	1.7 %

Category	Concentration average	Intensity average	Intensity RSD
45Sc (KED)	136.806 %	53,862 cps	0.5 %
51V (KED)	0.839 ppb	8,182 cps	2.4 %
52Cr (KED)	2.642 ppb	43,942 cps	1.0 %
55Mn (KED)	12.314 ppb	96,413 cps	1.1 %
56Fe (KED)	511.561 ppb	6,622,989 cps	0.8 %
58Ni (KED)	1.740 ppb	54,333 cps	1.7 %
59Co (KED)	0.256 ppb	7,797 cps	0.9 %
63Cu (KED)	-8.005 ppb	275,019 cps	1.0 %
64Zn (KED)	247.587 ppb	862,456 cps	0.9 %
69Ga (KED)	1.324 ppb	10,886 cps	0.6 %
75As (KED)	0.527 ppb	822 cps	5.0 %
80Se (KED)	0.770 ppb	1,445 cps	5.8 %
85Rb (KED)	1.929 ppb	12,349 cps	3.0 %
88Sr (KED)	6.491 ppb	54,619 cps	1.1 %
89Y (KED)	107.819 %	417,795 cps	1.3 %
107Ag (KED)	0.131 ppb	6,044 cps	2.2 %
114Cd (KED)	0.028 ppb	2,089 cps	4.5 %
115In (KED)	90.636 %	706,756 cps	0.4 %
133Cs (KED)	0.090 ppb	2,745 cps	2.0 %
138Ba (KED)	4.197 ppb	225,776 cps	0.9 %
139La (KED)	0.414 ppb	31,669 cps	1.6 %
140Ce (KED)	0.879 ppb	90,223 cps	0.5 %
141Pr (KED)	0.087 ppb	9,578 cps	2.1 %
142Nd (KED)	0.509 ppb	22,664 cps	2.1 %
152Sm (KED)	0.065 ppb	2,766 cps	3.5 %
153Eu (KED)	0.014 ppb	1,182 cps	5.7 %
158Gd (KED)	0.060 ppb	3,499 cps	3.1 %
159Tb (KED)	88.987 %	3,853,197 cps	1.2 %
164Dy (KED)	0.038 ppb	2,488 cps	2.3 %
166Er (KED)	0.016 ppb	1,766 cps	3.0 %
169Tm (KED)	0.002 ppb	677 cps	4.9 %
174Yb (KED)	0.016 ppb	1,623 cps	10.6 %
175Lu (KED)	-0.103 ppb	21,227 cps	1.6 %
205Tl (KED)	0.015 ppb	2,354 cps	3.0 %
208Pb (KED)	-2.918 ppb	152,546 cps	2.7 %
209Bi (KED)	70.609 %	2,965,467 cps	1.3 %
232Th (KED)	0.133 ppb	28,092 cps	1.1 %
238U (KED)	0.043 ppb	12,119 cps	0.7 %

Sample Summary

Instrument ID: iCAP Q

Analysis index: 17

Analysis name: 178588jian

Analysis started at: 9/3/2021 4:44:04 PM

User name: WINDOWS-UPCI4ER\Administrator

Category	Concentration average	Concentration RSD
6Li (KED)	148.950 %	6.0 %
9Be (KED)	0.019 ppb	6.1 %
11B (KED)	224.335 ppb	0.2 %
24Mg (KED)	429.428 ppb	6.7 %
27Al (KED)	482.381 ppb	3.9 %
45Sc (KED)	135.349 %	3.6 %
51V (KED)	0.751 ppb	3.8 %
52Cr (KED)	1.821 ppb	4.2 %
55Mn (KED)	10.454 ppb	4.9 %
56Fe (KED)	543.845 ppb	2.6 %
58Ni (KED)	1.417 ppb	6.7 %
59Co (KED)	0.221 ppb	6.9 %
63Cu (KED)	-9.408 ppb	4.3 %
64Zn (KED)	242.419 ppb	1.4 %
69Ga (KED)	1.103 ppb	2.7 %
75As (KED)	0.305 ppb	5.9 %
80Se (KED)	1.025 ppb	12.0 %
85Rb (KED)	2.017 ppb	1.3 %
88Sr (KED)	7.545 ppb	0.3 %
89Y (KED)	106.845 %	1.5 %
107Ag (KED)	0.229 ppb	4.6 %
114Cd (KED)	0.061 ppb	4.1 %
115In (KED)	93.354 %	1.7 %
133Cs (KED)	0.069 ppb	7.5 %
138Ba (KED)	3.619 ppb	2.9 %
139La (KED)	0.391 ppb	3.6 %
140Ce (KED)	0.812 ppb	1.9 %
141Pr (KED)	0.094 ppb	1.9 %
142Nd (KED)	0.492 ppb	3.6 %
152Sm (KED)	0.069 ppb	1.0 %
153Eu (KED)	0.013 ppb	1.3 %
158Gd (KED)	0.060 ppb	4.7 %
159Tb (KED)	91.274 %	1.6 %
164Dy (KED)	0.039 ppb	8.0 %
166Er (KED)	0.016 ppb	4.5 %
169Tm (KED)	0.002 ppb	15.0 %
174Yb (KED)	0.014 ppb	2.7 %
175Lu (KED)	-0.104 ppb	4.6 %
205Tl (KED)	0.007 ppb	6.1 %
208Pb (KED)	-3.251 ppb	0.6 %
209Bi (KED)	74.509 %	1.0 %
232Th (KED)	0.141 ppb	2.0 %
238U (KED)	0.037 ppb	3.0 %

Category	Concentration average	Intensity average	Intensity RSD
6Li (KED)	148.950 %	3,757 cps	6.0 %
9Be (KED)	0.019 ppb	3 cps	0.0 %
11B (KED)	224.335 ppb	759 cps	8.4 %
24Mg (KED)	429.428 ppb	258,112 cps	0.9 %
27Al (KED)	482.381 ppb	67,574 cps	1.2 %

Category	Concentration average	Intensity average	Intensity RSD
45Sc (KED)	135.349 %	53,288 cps	3.6 %
51V (KED)	0.751 ppb	7,257 cps	2.6 %
52Cr (KED)	1.821 ppb	31,428 cps	0.8 %
55Mn (KED)	10.454 ppb	81,364 cps	1.2 %
56Fe (KED)	543.845 ppb	6,955,790 cps	1.2 %
58Ni (KED)	1.417 ppb	48,225 cps	0.2 %
59Co (KED)	0.221 ppb	6,722 cps	3.6 %
63Cu (KED)	-9.408 ppb	255,270 cps	1.1 %
64Zn (KED)	242.419 ppb	839,537 cps	0.3 %
69Ga (KED)	1.103 ppb	9,516 cps	1.1 %
75As (KED)	0.305 ppb	528 cps	5.9 %
80Se (KED)	1.025 ppb	1,532 cps	1.8 %
85Rb (KED)	2.017 ppb	12,734 cps	1.7 %
88Sr (KED)	7.545 ppb	62,528 cps	1.8 %
89Y (KED)	106.845 %	414,018 cps	1.5 %
107Ag (KED)	0.229 ppb	10,710 cps	2.7 %
114Cd (KED)	0.061 ppb	2,718 cps	1.1 %
115In (KED)	93.354 %	727,953 cps	1.7 %
133Cs (KED)	0.069 ppb	2,237 cps	4.5 %
138Ba (KED)	3.619 ppb	210,004 cps	1.7 %
139La (KED)	0.391 ppb	30,759 cps	1.9 %
140Ce (KED)	0.812 ppb	85,708 cps	1.1 %
141Pr (KED)	0.094 ppb	10,598 cps	1.7 %
142Nd (KED)	0.492 ppb	22,497 cps	2.0 %
152Sm (KED)	0.069 ppb	3,017 cps	2.6 %
153Eu (KED)	0.013 ppb	1,114 cps	2.8 %
158Gd (KED)	0.060 ppb	3,574 cps	3.0 %
159Tb (KED)	91.274 %	3,952,203 cps	1.6 %
164Dy (KED)	0.039 ppb	2,670 cps	9.2 %
166Er (KED)	0.016 ppb	1,835 cps	4.5 %
169Tm (KED)	0.002 ppb	692 cps	15.2 %
174Yb (KED)	0.014 ppb	1,458 cps	2.6 %
175Lu (KED)	-0.104 ppb	21,628 cps	2.9 %
205Tl (KED)	0.007 ppb	1,228 cps	4.8 %
208Pb (KED)	-3.251 ppb	125,633 cps	2.1 %
209Bi (KED)	74.509 %	3,129,239 cps	1.0 %
232Th (KED)	0.141 ppb	31,485 cps	1.2 %
238U (KED)	0.037 ppb	11,268 cps	2.5 %

Sample Summary

Instrument ID: iCAP Q

Analysis index: 18

Analysis name: 00025jian

Analysis started at: 9/3/2021 4:47:23 PM

User name: WINDOWS-UPCI4ER\Administrator

Category	Concentration average	Concentration RSD
6Li (KED)	147.055 %	0.5 %
9Be (KED)	0.032 ppb	34.7 %
11B (KED)	225.688 ppb	0.9 %
24Mg (KED)	381.851 ppb	0.4 %
27Al (KED)	483.820 ppb	1.7 %
45Sc (KED)	132.962 %	2.0 %
51V (KED)	0.727 ppb	5.1 %
52Cr (KED)	1.990 ppb	1.1 %
55Mn (KED)	9.278 ppb	3.5 %
56Fe (KED)	469.086 ppb	1.2 %
58Ni (KED)	1.206 ppb	6.8 %
59Co (KED)	0.218 ppb	0.4 %
63Cu (KED)	-9.464 ppb	2.0 %
64Zn (KED)	217.479 ppb	2.0 %
69Ga (KED)	1.794 ppb	3.7 %
75As (KED)	0.426 ppb	1.8 %
80Se (KED)	0.727 ppb	24.0 %
85Rb (KED)	1.693 ppb	0.4 %
88Sr (KED)	4.611 ppb	3.8 %
89Y (KED)	105.658 %	1.4 %
107Ag (KED)	0.082 ppb	1.4 %
114Cd (KED)	-0.006 ppb	20.5 %
115In (KED)	94.145 %	0.3 %
133Cs (KED)	0.076 ppb	6.7 %
138Ba (KED)	6.262 ppb	2.5 %
139La (KED)	0.317 ppb	3.0 %
140Ce (KED)	0.662 ppb	1.0 %
141Pr (KED)	0.073 ppb	2.0 %
142Nd (KED)	0.396 ppb	1.0 %
152Sm (KED)	0.055 ppb	6.7 %
153Eu (KED)	0.012 ppb	7.5 %
158Gd (KED)	0.046 ppb	1.7 %
159Tb (KED)	92.403 %	1.2 %
164Dy (KED)	0.032 ppb	2.5 %
166Er (KED)	0.013 ppb	5.7 %
169Tm (KED)	0.002 ppb	5.4 %
174Yb (KED)	0.014 ppb	1.9 %
175Lu (KED)	-0.108 ppb	2.8 %
205Tl (KED)	0.009 ppb	5.7 %
208Pb (KED)	-3.243 ppb	1.8 %
209Bi (KED)	75.280 %	1.4 %
232Th (KED)	0.116 ppb	3.5 %
238U (KED)	0.038 ppb	0.5 %

Category	Concentration average	Intensity average	Intensity RSD
6Li (KED)	147.055 %	3,709 cps	0.5 %
9Be (KED)	0.032 ppb	6 cps	34.6 %
11B (KED)	225.688 ppb	674 cps	16.4 %
24Mg (KED)	381.851 ppb	227,931 cps	0.9 %
27Al (KED)	483.820 ppb	66,613 cps	0.4 %

Category	Concentration average	Intensity average	Intensity RSD
45Sc (KED)	132.962 %	52,348 cps	2.0 %
51V (KED)	0.727 ppb	6,902 cps	3.5 %
52Cr (KED)	1.990 ppb	33,330 cps	1.3 %
55Mn (KED)	9.278 ppb	71,342 cps	1.3 %
56Fe (KED)	469.086 ppb	5,909,790 cps	1.0 %
58Ni (KED)	1.206 ppb	43,891 cps	1.6 %
59Co (KED)	0.218 ppb	6,532 cps	1.7 %
63Cu (KED)	-9.464 ppb	251,773 cps	0.5 %
64Zn (KED)	217.479 ppb	757,974 cps	0.4 %
69Ga (KED)	1.794 ppb	13,350 cps	1.5 %
75As (KED)	0.426 ppb	677 cps	1.8 %
80Se (KED)	0.727 ppb	1,399 cps	3.7 %
85Rb (KED)	1.693 ppb	10,787 cps	1.5 %
88Sr (KED)	4.611 ppb	38,717 cps	2.5 %
89Y (KED)	105.658 %	409,419 cps	1.4 %
107Ag (KED)	0.082 ppb	4,000 cps	1.4 %
114Cd (KED)	-0.006 ppb	1,568 cps	1.2 %
115In (KED)	94.145 %	734,121 cps	0.3 %
133Cs (KED)	0.076 ppb	2,462 cps	6.0 %
138Ba (KED)	6.262 ppb	312,500 cps	1.1 %
139La (KED)	0.317 ppb	25,403 cps	1.8 %
140Ce (KED)	0.662 ppb	71,295 cps	1.2 %
141Pr (KED)	0.073 ppb	8,423 cps	2.1 %
142Nd (KED)	0.396 ppb	18,500 cps	1.2 %
152Sm (KED)	0.055 ppb	2,431 cps	5.2 %
153Eu (KED)	0.012 ppb	1,040 cps	6.2 %
158Gd (KED)	0.046 ppb	2,836 cps	1.1 %
159Tb (KED)	92.403 %	4,001,116 cps	1.2 %
164Dy (KED)	0.032 ppb	2,234 cps	1.7 %
166Er (KED)	0.013 ppb	1,602 cps	4.8 %
169Tm (KED)	0.002 ppb	627 cps	5.4 %
174Yb (KED)	0.014 ppb	1,442 cps	0.5 %
175Lu (KED)	-0.108 ppb	21,311 cps	1.0 %
205Tl (KED)	0.009 ppb	1,587 cps	3.8 %
208Pb (KED)	-3.243 ppb	127,772 cps	4.3 %
209Bi (KED)	75.280 %	3,161,630 cps	1.4 %
232Th (KED)	0.116 ppb	26,242 cps	2.1 %
238U (KED)	0.038 ppb	11,701 cps	1.1 %

Sample Summary

Instrument ID: iCAP Q

Analysis index: 19

Analysis name: 178606jian

Analysis started at: 9/3/2021 4:50:50 PM

User name: WINDOWS-UPCI4ER\Administrator

Category	Concentration average	Concentration RSD
6Li (KED)	144.896 %	5.1 %
9Be (KED)	0.020 ppb	97.7 %
11B (KED)	229.074 ppb	0.5 %
24Mg (KED)	406.685 ppb	6.5 %
27Al (KED)	387.194 ppb	3.3 %
45Sc (KED)	131.849 %	2.4 %
51V (KED)	0.644 ppb	4.7 %
52Cr (KED)	1.624 ppb	3.1 %
55Mn (KED)	8.827 ppb	4.0 %
56Fe (KED)	388.158 ppb	2.3 %
58Ni (KED)	0.988 ppb	1.8 %
59Co (KED)	0.214 ppb	1.7 %
63Cu (KED)	-10.544 ppb	1.0 %
64Zn (KED)	215.656 ppb	2.2 %
69Ga (KED)	0.871 ppb	0.5 %
75As (KED)	0.227 ppb	9.5 %
80Se (KED)	0.631 ppb	54.2 %
85Rb (KED)	2.751 ppb	1.3 %
88Sr (KED)	6.606 ppb	3.8 %
89Y (KED)	105.363 %	0.7 %
107Ag (KED)	0.274 ppb	1.3 %
114Cd (KED)	0.020 ppb	13.1 %
115In (KED)	93.032 %	1.4 %
133Cs (KED)	0.062 ppb	1.2 %
138Ba (KED)	2.964 ppb	0.7 %
139La (KED)	0.297 ppb	2.5 %
140Ce (KED)	0.601 ppb	3.1 %
141Pr (KED)	0.069 ppb	4.2 %
142Nd (KED)	0.367 ppb	1.8 %
152Sm (KED)	0.051 ppb	7.0 %
153Eu (KED)	0.011 ppb	7.1 %
158Gd (KED)	0.045 ppb	2.6 %
159Tb (KED)	90.366 %	1.3 %
164Dy (KED)	0.031 ppb	2.0 %
166Er (KED)	0.014 ppb	9.8 %
169Tm (KED)	0.002 ppb	7.0 %
174Yb (KED)	0.015 ppb	3.1 %
175Lu (KED)	-0.105 ppb	6.3 %
205Tl (KED)	0.007 ppb	6.1 %
208Pb (KED)	-3.458 ppb	0.6 %
209Bi (KED)	72.630 %	1.0 %
232Th (KED)	0.117 ppb	1.1 %
238U (KED)	0.030 ppb	2.0 %

Category	Concentration average	Intensity average	Intensity RSD
6Li (KED)	144.896 %	3,655 cps	5.1 %
9Be (KED)	0.020 ppb	3 cps	100.0 %
11B (KED)	229.074 ppb	479 cps	8.1 %
24Mg (KED)	406.685 ppb	238,250 cps	1.6 %
27Al (KED)	387.194 ppb	53,355 cps	1.3 %

Category	Concentration average	Intensity average	Intensity RSD
45Sc (KED)	131.849 %	51,910 cps	2.4 %
51V (KED)	0.644 ppb	6,078 cps	2.4 %
52Cr (KED)	1.624 ppb	27,829 cps	2.4 %
55Mn (KED)	8.827 ppb	67,450 cps	1.5 %
56Fe (KED)	388.158 ppb	4,864,975 cps	0.9 %
58Ni (KED)	0.988 ppb	39,936 cps	1.7 %
59Co (KED)	0.214 ppb	6,362 cps	0.8 %
63Cu (KED)	-10.544 ppb	238,004 cps	0.6 %
64Zn (KED)	215.656 ppb	750,658 cps	1.4 %
69Ga (KED)	0.871 ppb	8,062 cps	0.6 %
75As (KED)	0.227 ppb	420 cps	6.0 %
80Se (KED)	0.631 ppb	1,359 cps	10.5 %
85Rb (KED)	2.751 ppb	16,646 cps	1.0 %
88Sr (KED)	6.606 ppb	54,279 cps	3.3 %
89Y (KED)	105.363 %	408,276 cps	0.7 %
107Ag (KED)	0.274 ppb	12,760 cps	0.8 %
114Cd (KED)	0.020 ppb	1,996 cps	3.4 %
115In (KED)	93.032 %	725,439 cps	1.4 %
133Cs (KED)	0.062 ppb	2,066 cps	2.3 %
138Ba (KED)	2.964 ppb	183,729 cps	0.8 %
139La (KED)	0.297 ppb	23,350 cps	1.1 %
140Ce (KED)	0.601 ppb	63,559 cps	1.7 %
141Pr (KED)	0.069 ppb	7,874 cps	2.8 %
142Nd (KED)	0.367 ppb	16,848 cps	0.8 %
152Sm (KED)	0.051 ppb	2,217 cps	6.8 %
153Eu (KED)	0.011 ppb	932 cps	7.3 %
158Gd (KED)	0.045 ppb	2,669 cps	1.4 %
159Tb (KED)	90.366 %	3,912,897 cps	1.3 %
164Dy (KED)	0.031 ppb	2,117 cps	1.3 %
166Er (KED)	0.014 ppb	1,652 cps	7.5 %
169Tm (KED)	0.002 ppb	583 cps	5.1 %
174Yb (KED)	0.015 ppb	1,573 cps	1.7 %
175Lu (KED)	-0.105 ppb	21,211 cps	3.6 %
205Tl (KED)	0.007 ppb	1,248 cps	6.5 %
208Pb (KED)	-3.458 ppb	101,148 cps	1.1 %
209Bi (KED)	72.630 %	3,050,330 cps	1.0 %
232Th (KED)	0.117 ppb	25,640 cps	0.8 %
238U (KED)	0.030 ppb	9,347 cps	0.6 %

Sample Summary

Instrument ID: iCAP Q

Analysis index: 20

Analysis name: 00027jian

Analysis started at: 9/3/2021 4:54:21 PM

User name: WINDOWS-UPCI4ER\Administrator

Category	Concentration average	Concentration RSD
6Li (KED)	150.052 %	3.1 %
9Be (KED)	0.032 ppb	92.7 %
11B (KED)	223.251 ppb	0.6 %
24Mg (KED)	891.440 ppb	1.5 %
27Al (KED)	964.177 ppb	2.8 %
45Sc (KED)	135.983 %	0.8 %
51V (KED)	1.403 ppb	1.8 %
52Cr (KED)	3.226 ppb	1.1 %
55Mn (KED)	18.566 ppb	2.7 %
56Fe (KED)	830.192 ppb	1.2 %
58Ni (KED)	2.647 ppb	3.4 %
59Co (KED)	0.387 ppb	2.1 %
63Cu (KED)	-12.075 ppb	1.6 %
64Zn (KED)	233.234 ppb	2.9 %
69Ga (KED)	2.002 ppb	8.4 %
75As (KED)	0.783 ppb	5.0 %
80Se (KED)	0.881 ppb	12.5 %
85Rb (KED)	2.945 ppb	2.3 %
88Sr (KED)	11.056 ppb	2.0 %
89Y (KED)	106.242 %	1.0 %
107Ag (KED)	0.117 ppb	4.1 %
114Cd (KED)	0.031 ppb	4.1 %
115In (KED)	90.775 %	0.4 %
133Cs (KED)	0.167 ppb	1.9 %
138Ba (KED)	6.582 ppb	4.3 %
139La (KED)	0.747 ppb	3.6 %
140Ce (KED)	1.521 ppb	4.3 %
141Pr (KED)	0.171 ppb	3.9 %
142Nd (KED)	0.945 ppb	2.9 %
152Sm (KED)	0.120 ppb	4.5 %
153Eu (KED)	0.023 ppb	2.5 %
158Gd (KED)	0.106 ppb	5.3 %
159Tb (KED)	90.615 %	2.2 %
164Dy (KED)	0.070 ppb	3.3 %
166Er (KED)	0.032 ppb	6.5 %
169Tm (KED)	0.005 ppb	3.7 %
174Yb (KED)	0.027 ppb	1.4 %
175Lu (KED)	-0.102 ppb	1.2 %
205Tl (KED)	0.018 ppb	5.9 %
208Pb (KED)	-2.365 ppb	0.6 %
209Bi (KED)	71.006 %	2.7 %
232Th (KED)	0.271 ppb	1.2 %
238U (KED)	0.088 ppb	3.7 %

Category	Concentration average	Intensity average	Intensity RSD
6Li (KED)	150.052 %	3,785 cps	3.1 %
9Be (KED)	0.032 ppb	6 cps	91.7 %
11B (KED)	223.251 ppb	824 cps	9.9 %
24Mg (KED)	891.440 ppb	533,567 cps	1.9 %
27Al (KED)	964.177 ppb	133,201 cps	2.5 %

Category	Concentration average	Intensity average	Intensity RSD
45Sc (KED)	135.983 %	53,538 cps	0.8 %
51V (KED)	1.403 ppb	13,521 cps	2.6 %
52Cr (KED)	3.226 ppb	52,258 cps	0.4 %
55Mn (KED)	18.566 ppb	142,857 cps	2.8 %
56Fe (KED)	830.192 ppb	10,622,078 cps	1.3 %
58Ni (KED)	2.647 ppb	69,461 cps	2.9 %
59Co (KED)	0.387 ppb	11,471 cps	2.2 %
63Cu (KED)	-12.075 ppb	221,281 cps	0.0 %
64Zn (KED)	233.234 ppb	808,014 cps	1.4 %
69Ga (KED)	2.002 ppb	14,613 cps	5.6 %
75As (KED)	0.783 ppb	1,140 cps	4.1 %
80Se (KED)	0.881 ppb	1,468 cps	3.9 %
85Rb (KED)	2.945 ppb	17,874 cps	1.2 %
88Sr (KED)	11.056 ppb	89,952 cps	1.0 %
89Y (KED)	106.242 %	411,681 cps	1.0 %
107Ag (KED)	0.117 ppb	5,402 cps	3.6 %
114Cd (KED)	0.031 ppb	2,139 cps	1.3 %
115In (KED)	90.775 %	707,842 cps	0.4 %
133Cs (KED)	0.167 ppb	4,815 cps	1.4 %
138Ba (KED)	6.582 ppb	318,205 cps	1.1 %
139La (KED)	0.747 ppb	57,311 cps	1.4 %
140Ce (KED)	1.521 ppb	156,767 cps	2.1 %
141Pr (KED)	0.171 ppb	18,783 cps	2.9 %
142Nd (KED)	0.945 ppb	42,073 cps	0.9 %
152Sm (KED)	0.120 ppb	5,079 cps	3.3 %
153Eu (KED)	0.023 ppb	1,952 cps	1.0 %
158Gd (KED)	0.106 ppb	6,178 cps	3.0 %
159Tb (KED)	90.615 %	3,923,686 cps	2.2 %
164Dy (KED)	0.070 ppb	4,591 cps	4.0 %
166Er (KED)	0.032 ppb	3,084 cps	5.0 %
169Tm (KED)	0.005 ppb	1,253 cps	3.7 %
174Yb (KED)	0.027 ppb	2,694 cps	1.1 %
175Lu (KED)	-0.102 ppb	21,833 cps	2.8 %
205Tl (KED)	0.018 ppb	2,894 cps	4.8 %
208Pb (KED)	-2.365 ppb	209,158 cps	3.4 %
209Bi (KED)	71.006 %	2,982,123 cps	2.7 %
232Th (KED)	0.271 ppb	56,857 cps	2.0 %
238U (KED)	0.088 ppb	23,147 cps	0.8 %

Sample Summary

Instrument ID: iCAP Q

Analysis index: 21

Analysis name: 179338jian

Analysis started at: 9/3/2021 4:57:41 PM

User name: WINDOWS-UPCI4ER\Administrator

Category	Concentration average	Concentration RSD
6Li (KED)	148.950 %	4.1 %
9Be (KED)	0.025 ppb	112.1 %
11B (KED)	229.916 ppb	0.1 %
24Mg (KED)	447.767 ppb	4.0 %
27Al (KED)	482.367 ppb	2.1 %
45Sc (KED)	133.730 %	0.2 %
51V (KED)	0.740 ppb	1.2 %
52Cr (KED)	1.325 ppb	0.6 %
55Mn (KED)	10.485 ppb	1.2 %
56Fe (KED)	428.043 ppb	0.3 %
58Ni (KED)	0.909 ppb	5.2 %
59Co (KED)	0.231 ppb	2.1 %
63Cu (KED)	-11.675 ppb	3.1 %
64Zn (KED)	243.599 ppb	2.1 %
69Ga (KED)	1.030 ppb	0.6 %
75As (KED)	0.178 ppb	7.1 %
80Se (KED)	0.357 ppb	45.5 %
85Rb (KED)	2.050 ppb	0.7 %
88Sr (KED)	8.408 ppb	2.6 %
89Y (KED)	107.737 %	1.4 %
107Ag (KED)	0.060 ppb	1.2 %
114Cd (KED)	-0.025 ppb	5.0 %
115In (KED)	94.353 %	0.9 %
133Cs (KED)	0.068 ppb	2.8 %
138Ba (KED)	3.510 ppb	3.4 %
139La (KED)	0.368 ppb	2.2 %
140Ce (KED)	0.757 ppb	1.5 %
141Pr (KED)	0.084 ppb	1.9 %
142Nd (KED)	0.446 ppb	3.8 %
152Sm (KED)	0.060 ppb	7.5 %
153Eu (KED)	0.013 ppb	3.1 %
158Gd (KED)	0.052 ppb	6.2 %
159Tb (KED)	91.547 %	1.8 %
164Dy (KED)	0.036 ppb	3.8 %
166Er (KED)	0.015 ppb	7.2 %
169Tm (KED)	0.002 ppb	19.2 %
174Yb (KED)	0.013 ppb	3.2 %
175Lu (KED)	-0.104 ppb	2.9 %
205Tl (KED)	0.008 ppb	2.9 %
208Pb (KED)	-3.387 ppb	0.6 %
209Bi (KED)	73.105 %	1.1 %
232Th (KED)	0.127 ppb	1.5 %
238U (KED)	0.038 ppb	1.0 %

Category	Concentration average	Intensity average	Intensity RSD
6Li (KED)	148.950 %	3,757 cps	4.1 %
9Be (KED)	0.025 ppb	4 cps	114.6 %
11B (KED)	229.916 ppb	448 cps	7.6 %
24Mg (KED)	447.767 ppb	269,261 cps	1.2 %
27Al (KED)	482.367 ppb	66,818 cps	1.9 %

Category	Concentration average	Intensity average	Intensity RSD
45Sc (KED)	133.730 %	52,651 cps	0.2 %
51V (KED)	0.740 ppb	7,074 cps	1.4 %
52Cr (KED)	1.325 ppb	23,916 cps	0.4 %
55Mn (KED)	10.485 ppb	80,711 cps	1.0 %
56Fe (KED)	428.043 ppb	5,433,200 cps	0.4 %
58Ni (KED)	0.909 ppb	39,183 cps	1.8 %
59Co (KED)	0.231 ppb	6,922 cps	1.9 %
63Cu (KED)	-11.675 ppb	229,325 cps	0.7 %
64Zn (KED)	243.599 ppb	850,002 cps	0.5 %
69Ga (KED)	1.030 ppb	9,172 cps	1.0 %
75As (KED)	0.178 ppb	366 cps	5.9 %
80Se (KED)	0.357 ppb	1,280 cps	5.4 %
85Rb (KED)	2.050 ppb	13,032 cps	1.4 %
88Sr (KED)	8.408 ppb	69,960 cps	1.6 %
89Y (KED)	107.737 %	417,477 cps	1.4 %
107Ag (KED)	0.060 ppb	2,956 cps	1.9 %
114Cd (KED)	-0.025 ppb	1,231 cps	1.1 %
115In (KED)	94.353 %	735,741 cps	0.9 %
133Cs (KED)	0.068 ppb	2,246 cps	2.4 %
138Ba (KED)	3.510 ppb	206,509 cps	1.1 %
139La (KED)	0.368 ppb	29,048 cps	0.3 %
140Ce (KED)	0.757 ppb	80,333 cps	2.0 %
141Pr (KED)	0.084 ppb	9,570 cps	0.9 %
142Nd (KED)	0.446 ppb	20,529 cps	2.9 %
152Sm (KED)	0.060 ppb	2,641 cps	5.6 %
153Eu (KED)	0.013 ppb	1,106 cps	2.3 %
158Gd (KED)	0.052 ppb	3,130 cps	4.7 %
159Tb (KED)	91.547 %	3,964,017 cps	1.8 %
164Dy (KED)	0.036 ppb	2,455 cps	2.0 %
166Er (KED)	0.015 ppb	1,759 cps	3.6 %
169Tm (KED)	0.002 ppb	627 cps	15.7 %
174Yb (KED)	0.013 ppb	1,378 cps	4.6 %
175Lu (KED)	-0.104 ppb	21,640 cps	1.2 %
205Tl (KED)	0.008 ppb	1,286 cps	1.7 %
208Pb (KED)	-3.387 ppb	109,213 cps	1.7 %
209Bi (KED)	73.105 %	3,070,262 cps	1.1 %
232Th (KED)	0.127 ppb	27,804 cps	2.6 %
238U (KED)	0.038 ppb	11,295 cps	2.0 %

Sample Summary

Instrument ID: iCAP Q

Analysis index: 22

Analysis name: 00028jian

Analysis started at: 9/3/2021 5:01:07 PM

User name: WINDOWS-UPCI4ER\Administrator

Category	Concentration average	Concentration RSD
6Li (KED)	145.602 %	8.4 %
9Be (KED)	0.020 ppb	95.6 %
11B (KED)	224.547 ppb	0.6 %
24Mg (KED)	538.783 ppb	8.4 %
27Al (KED)	710.250 ppb	0.7 %
45Sc (KED)	128.581 %	1.2 %
51V (KED)	1.062 ppb	2.4 %
52Cr (KED)	2.939 ppb	1.0 %
55Mn (KED)	16.606 ppb	0.7 %
56Fe (KED)	716.983 ppb	2.1 %
58Ni (KED)	4.554 ppb	2.8 %
59Co (KED)	0.313 ppb	0.4 %
63Cu (KED)	-11.896 ppb	2.2 %
64Zn (KED)	200.165 ppb	2.2 %
69Ga (KED)	1.482 ppb	5.4 %
75As (KED)	0.739 ppb	1.3 %
80Se (KED)	0.875 ppb	10.7 %
85Rb (KED)	1.524 ppb	1.7 %
88Sr (KED)	6.821 ppb	1.6 %
89Y (KED)	106.946 %	1.7 %
107Ag (KED)	0.071 ppb	2.8 %
114Cd (KED)	0.033 ppb	9.5 %
115In (KED)	94.515 %	1.3 %
133Cs (KED)	0.133 ppb	1.6 %
138Ba (KED)	5.284 ppb	1.3 %
139La (KED)	0.462 ppb	0.1 %
140Ce (KED)	0.930 ppb	1.9 %
141Pr (KED)	0.107 ppb	4.1 %
142Nd (KED)	0.576 ppb	0.7 %
152Sm (KED)	0.079 ppb	4.2 %
153Eu (KED)	0.016 ppb	1.9 %
158Gd (KED)	0.072 ppb	4.4 %
159Tb (KED)	93.100 %	1.6 %
164Dy (KED)	0.047 ppb	1.0 %
166Er (KED)	0.022 ppb	1.6 %
169Tm (KED)	0.003 ppb	9.5 %
174Yb (KED)	0.020 ppb	2.5 %
175Lu (KED)	-0.103 ppb	2.9 %
205Tl (KED)	0.016 ppb	6.2 %
208Pb (KED)	-2.834 ppb	1.8 %
209Bi (KED)	75.253 %	2.1 %
232Th (KED)	0.182 ppb	3.2 %
238U (KED)	0.055 ppb	3.1 %

Category	Concentration average	Intensity average	Intensity RSD
6Li (KED)	145.602 %	3,673 cps	8.4 %
9Be (KED)	0.020 ppb	3 cps	100.0 %
11B (KED)	224.547 ppb	727 cps	7.4 %
24Mg (KED)	538.783 ppb	314,225 cps	0.6 %
27Al (KED)	710.250 ppb	93,435 cps	1.5 %

Category	Concentration average	Intensity average	Intensity RSD
45Sc (KED)	128.581 %	50,624 cps	1.2 %
51V (KED)	1.062 ppb	9,699 cps	2.1 %
52Cr (KED)	2.939 ppb	45,419 cps	0.4 %
55Mn (KED)	16.606 ppb	121,139 cps	1.1 %
56Fe (KED)	716.983 ppb	8,685,578 cps	0.9 %
58Ni (KED)	4.554 ppb	96,372 cps	1.0 %
59Co (KED)	0.313 ppb	8,870 cps	1.6 %
63Cu (KED)	-11.896 ppb	224,939 cps	0.7 %
64Zn (KED)	200.165 ppb	716,426 cps	0.1 %
69Ga (KED)	1.482 ppb	11,713 cps	3.8 %
75As (KED)	0.739 ppb	1,091 cps	0.8 %
80Se (KED)	0.875 ppb	1,475 cps	1.4 %
85Rb (KED)	1.524 ppb	9,963 cps	1.2 %
88Sr (KED)	6.821 ppb	56,810 cps	1.6 %
89Y (KED)	106.946 %	414,411 cps	1.7 %
107Ag (KED)	0.071 ppb	3,462 cps	1.4 %
114Cd (KED)	0.033 ppb	2,271 cps	3.8 %
115In (KED)	94.515 %	737,006 cps	1.3 %
133Cs (KED)	0.133 ppb	4,064 cps	1.0 %
138Ba (KED)	5.284 ppb	277,593 cps	0.7 %
139La (KED)	0.462 ppb	36,853 cps	1.6 %
140Ce (KED)	0.930 ppb	99,678 cps	0.6 %
141Pr (KED)	0.107 ppb	12,295 cps	2.7 %
142Nd (KED)	0.576 ppb	26,728 cps	1.5 %
152Sm (KED)	0.079 ppb	3,474 cps	2.8 %
153Eu (KED)	0.016 ppb	1,375 cps	2.7 %
158Gd (KED)	0.072 ppb	4,350 cps	2.6 %
159Tb (KED)	93.100 %	4,031,289 cps	1.6 %
164Dy (KED)	0.047 ppb	3,249 cps	2.0 %
166Er (KED)	0.022 ppb	2,364 cps	2.7 %
169Tm (KED)	0.003 ppb	868 cps	7.9 %
174Yb (KED)	0.020 ppb	2,066 cps	2.7 %
175Lu (KED)	-0.103 ppb	22,185 cps	3.1 %
205Tl (KED)	0.016 ppb	2,650 cps	3.8 %
208Pb (KED)	-2.834 ppb	171,460 cps	1.8 %
209Bi (KED)	75.253 %	3,160,489 cps	2.1 %
232Th (KED)	0.182 ppb	40,742 cps	1.3 %
238U (KED)	0.055 ppb	15,983 cps	0.8 %

Sample Summary

Instrument ID: iCAP Q

Analysis index: 23

Analysis name: 921144279jian

Analysis started at: 9/3/2021 5:04:48 PM

User name: WINDOWS-UPCI4ER\Administrator

Category	Concentration average	Concentration RSD
6Li (KED)	142.297 %	1.6 %
9Be (KED)	0.027 ppb	115.6 %
11B (KED)	222.547 ppb	0.5 %
24Mg (KED)	543.825 ppb	2.9 %
27Al (KED)	888.080 ppb	1.0 %
45Sc (KED)	126.847 %	0.4 %
51V (KED)	1.235 ppb	0.7 %
52Cr (KED)	1.557 ppb	1.6 %
55Mn (KED)	15.893 ppb	1.0 %
56Fe (KED)	689.464 ppb	0.6 %
58Ni (KED)	1.518 ppb	3.2 %
59Co (KED)	0.278 ppb	1.7 %
63Cu (KED)	-23.720 ppb	0.2 %
64Zn (KED)	207.689 ppb	0.5 %
69Ga (KED)	1.246 ppb	5.3 %
75As (KED)	0.608 ppb	8.1 %
80Se (KED)	0.773 ppb	34.2 %
85Rb (KED)	1.483 ppb	2.8 %
88Sr (KED)	7.532 ppb	2.6 %
89Y (KED)	107.414 %	0.3 %
107Ag (KED)	0.032 ppb	3.5 %
114Cd (KED)	-0.007 ppb	8.5 %
115In (KED)	93.952 %	0.3 %
133Cs (KED)	0.190 ppb	2.8 %
138Ba (KED)	4.388 ppb	1.9 %
139La (KED)	0.566 ppb	0.4 %
140Ce (KED)	1.211 ppb	2.5 %
141Pr (KED)	0.134 ppb	3.6 %
142Nd (KED)	0.713 ppb	1.2 %
152Sm (KED)	0.097 ppb	1.1 %
153Eu (KED)	0.020 ppb	1.9 %
158Gd (KED)	0.086 ppb	2.3 %
159Tb (KED)	94.822 %	0.3 %
164Dy (KED)	0.061 ppb	1.8 %
166Er (KED)	0.026 ppb	3.9 %
169Tm (KED)	0.004 ppb	3.8 %
174Yb (KED)	0.023 ppb	4.0 %
175Lu (KED)	-0.106 ppb	2.4 %
205Tl (KED)	0.014 ppb	6.0 %
208Pb (KED)	-3.309 ppb	0.8 %
209Bi (KED)	77.873 %	0.3 %
232Th (KED)	0.213 ppb	0.7 %
238U (KED)	0.053 ppb	3.3 %

Category	Concentration average	Intensity average	Intensity RSD
6Li (KED)	142.297 %	3,589 cps	1.6 %
9Be (KED)	0.027 ppb	4 cps	114.6 %
11B (KED)	222.547 ppb	819 cps	5.6 %
24Mg (KED)	543.825 ppb	311,231 cps	1.3 %
27Al (KED)	888.080 ppb	114,646 cps	1.3 %

Category	Concentration average	Intensity average	Intensity RSD
45Sc (KED)	126.847 %	49,941 cps	0.4 %
51V (KED)	1.235 ppb	11,109 cps	1.0 %
52Cr (KED)	1.557 ppb	25,867 cps	1.4 %
55Mn (KED)	15.893 ppb	114,507 cps	1.2 %
56Fe (KED)	689.464 ppb	8,244,582 cps	0.8 %
58Ni (KED)	1.518 ppb	46,846 cps	1.3 %
59Co (KED)	0.278 ppb	7,804 cps	1.3 %
63Cu (KED)	-23.720 ppb	79,970 cps	0.9 %
64Zn (KED)	207.689 ppb	741,864 cps	0.6 %
69Ga (KED)	1.246 ppb	10,398 cps	4.0 %
75As (KED)	0.608 ppb	924 cps	7.1 %
80Se (KED)	0.773 ppb	1,441 cps	7.3 %
85Rb (KED)	1.483 ppb	9,776 cps	2.6 %
88Sr (KED)	7.532 ppb	62,749 cps	2.3 %
89Y (KED)	107.414 %	416,225 cps	0.3 %
107Ag (KED)	0.032 ppb	1,639 cps	3.3 %
114Cd (KED)	-0.007 ppb	1,543 cps	0.4 %
115In (KED)	93.952 %	732,612 cps	0.3 %
133Cs (KED)	0.190 ppb	5,599 cps	2.3 %
138Ba (KED)	4.388 ppb	247,996 cps	1.1 %
139La (KED)	0.566 ppb	45,787 cps	0.2 %
140Ce (KED)	1.211 ppb	131,297 cps	2.1 %
141Pr (KED)	0.134 ppb	15,524 cps	3.6 %
142Nd (KED)	0.713 ppb	33,487 cps	0.9 %
152Sm (KED)	0.097 ppb	4,321 cps	0.7 %
153Eu (KED)	0.020 ppb	1,740 cps	2.1 %
158Gd (KED)	0.086 ppb	5,291 cps	2.0 %
159Tb (KED)	94.822 %	4,105,826 cps	0.3 %
164Dy (KED)	0.061 ppb	4,224 cps	1.6 %
166Er (KED)	0.026 ppb	2,700 cps	3.4 %
169Tm (KED)	0.004 ppb	1,131 cps	3.2 %
174Yb (KED)	0.023 ppb	2,435 cps	4.0 %
175Lu (KED)	-0.106 ppb	22,229 cps	2.1 %
205Tl (KED)	0.014 ppb	2,517 cps	6.0 %
208Pb (KED)	-3.309 ppb	124,954 cps	1.9 %
209Bi (KED)	77.873 %	3,270,532 cps	0.3 %
232Th (KED)	0.213 ppb	49,307 cps	1.0 %
238U (KED)	0.053 ppb	16,065 cps	3.2 %

Sample Summary

Instrument ID: iCAP Q

Analysis index: 24

Analysis name: 921057709jian

Analysis started at: 9/3/2021 5:08:10 PM

User name: WINDOWS-UPCI4ER\Administrator

Category	Concentration average	Concentration RSD
6Li (KED)	138.111 %	3.7 %
9Be (KED)	0.047 ppb	47.5 %
11B (KED)	210.771 ppb	0.4 %
24Mg (KED)	488.193 ppb	4.4 %
27Al (KED)	786.355 ppb	0.6 %
45Sc (KED)	125.824 %	0.6 %
51V (KED)	1.063 ppb	2.1 %
52Cr (KED)	2.576 ppb	1.3 %
55Mn (KED)	14.116 ppb	0.5 %
56Fe (KED)	566.377 ppb	1.5 %
58Ni (KED)	1.320 ppb	2.1 %
59Co (KED)	0.282 ppb	1.1 %
63Cu (KED)	-22.495 ppb	0.3 %
64Zn (KED)	190.817 ppb	0.3 %
69Ga (KED)	1.035 ppb	2.0 %
75As (KED)	0.535 ppb	3.8 %
80Se (KED)	0.383 ppb	57.3 %
85Rb (KED)	1.439 ppb	1.5 %
88Sr (KED)	6.992 ppb	2.7 %
89Y (KED)	107.208 %	0.8 %
107Ag (KED)	0.033 ppb	8.8 %
114Cd (KED)	-0.005 ppb	89.1 %
115In (KED)	95.558 %	1.1 %
133Cs (KED)	0.152 ppb	2.2 %
138Ba (KED)	3.734 ppb	2.1 %
139La (KED)	0.584 ppb	2.0 %
140Ce (KED)	1.232 ppb	2.1 %
141Pr (KED)	0.138 ppb	1.7 %
142Nd (KED)	0.741 ppb	1.6 %
152Sm (KED)	0.094 ppb	9.5 %
153Eu (KED)	0.020 ppb	4.1 %
158Gd (KED)	0.086 ppb	5.4 %
159Tb (KED)	96.570 %	0.8 %
164Dy (KED)	0.057 ppb	3.7 %
166Er (KED)	0.027 ppb	2.3 %
169Tm (KED)	0.004 ppb	4.7 %
174Yb (KED)	0.023 ppb	2.3 %
175Lu (KED)	-0.106 ppb	3.4 %
205Tl (KED)	0.011 ppb	9.8 %
208Pb (KED)	-3.318 ppb	1.2 %
209Bi (KED)	79.453 %	3.6 %
232Th (KED)	0.214 ppb	3.2 %
238U (KED)	0.050 ppb	3.8 %

Category	Concentration average	Intensity average	Intensity RSD
6Li (KED)	138.111 %	3,484 cps	3.7 %
9Be (KED)	0.047 ppb	8 cps	49.5 %
11B (KED)	210.771 ppb	1,402 cps	0.4 %
24Mg (KED)	488.193 ppb	271,624 cps	0.8 %
27Al (KED)	786.355 ppb	100,967 cps	0.3 %

Category	Concentration average	Intensity average	Intensity RSD
45Sc (KED)	125.824 %	49,538 cps	0.6 %
51V (KED)	1.063 ppb	9,504 cps	2.4 %
52Cr (KED)	2.576 ppb	39,505 cps	0.5 %
55Mn (KED)	14.116 ppb	101,210 cps	0.8 %
56Fe (KED)	566.377 ppb	6,734,085 cps	1.0 %
58Ni (KED)	1.320 ppb	43,346 cps	0.9 %
59Co (KED)	0.282 ppb	7,871 cps	1.5 %
63Cu (KED)	-22.495 ppb	94,908 cps	0.9 %
64Zn (KED)	190.817 ppb	690,859 cps	0.8 %
69Ga (KED)	1.035 ppb	9,153 cps	2.2 %
75As (KED)	0.535 ppb	828 cps	2.8 %
80Se (KED)	0.383 ppb	1,285 cps	7.5 %
85Rb (KED)	1.439 ppb	9,507 cps	1.2 %
88Sr (KED)	6.992 ppb	58,314 cps	1.9 %
89Y (KED)	107.208 %	415,427 cps	0.8 %
107Ag (KED)	0.033 ppb	1,746 cps	8.1 %
114Cd (KED)	-0.005 ppb	1,610 cps	3.8 %
115In (KED)	95.558 %	745,136 cps	1.1 %
133Cs (KED)	0.152 ppb	4,630 cps	0.9 %
138Ba (KED)	3.734 ppb	226,726 cps	0.7 %
139La (KED)	0.584 ppb	48,021 cps	1.2 %
140Ce (KED)	1.232 ppb	135,919 cps	1.4 %
141Pr (KED)	0.138 ppb	16,237 cps	2.0 %
142Nd (KED)	0.741 ppb	35,404 cps	1.4 %
152Sm (KED)	0.094 ppb	4,262 cps	8.4 %
153Eu (KED)	0.020 ppb	1,812 cps	4.3 %
158Gd (KED)	0.086 ppb	5,403 cps	4.5 %
159Tb (KED)	96.570 %	4,181,510 cps	0.8 %
164Dy (KED)	0.057 ppb	4,054 cps	3.0 %
166Er (KED)	0.027 ppb	2,841 cps	2.5 %
169Tm (KED)	0.004 ppb	1,165 cps	4.4 %
174Yb (KED)	0.023 ppb	2,456 cps	2.9 %
175Lu (KED)	-0.106 ppb	22,601 cps	3.3 %
205Tl (KED)	0.011 ppb	2,056 cps	7.0 %
208Pb (KED)	-3.318 ppb	126,353 cps	1.6 %
209Bi (KED)	79.453 %	3,336,893 cps	3.6 %
232Th (KED)	0.214 ppb	50,466 cps	1.7 %
238U (KED)	0.050 ppb	15,661 cps	2.8 %